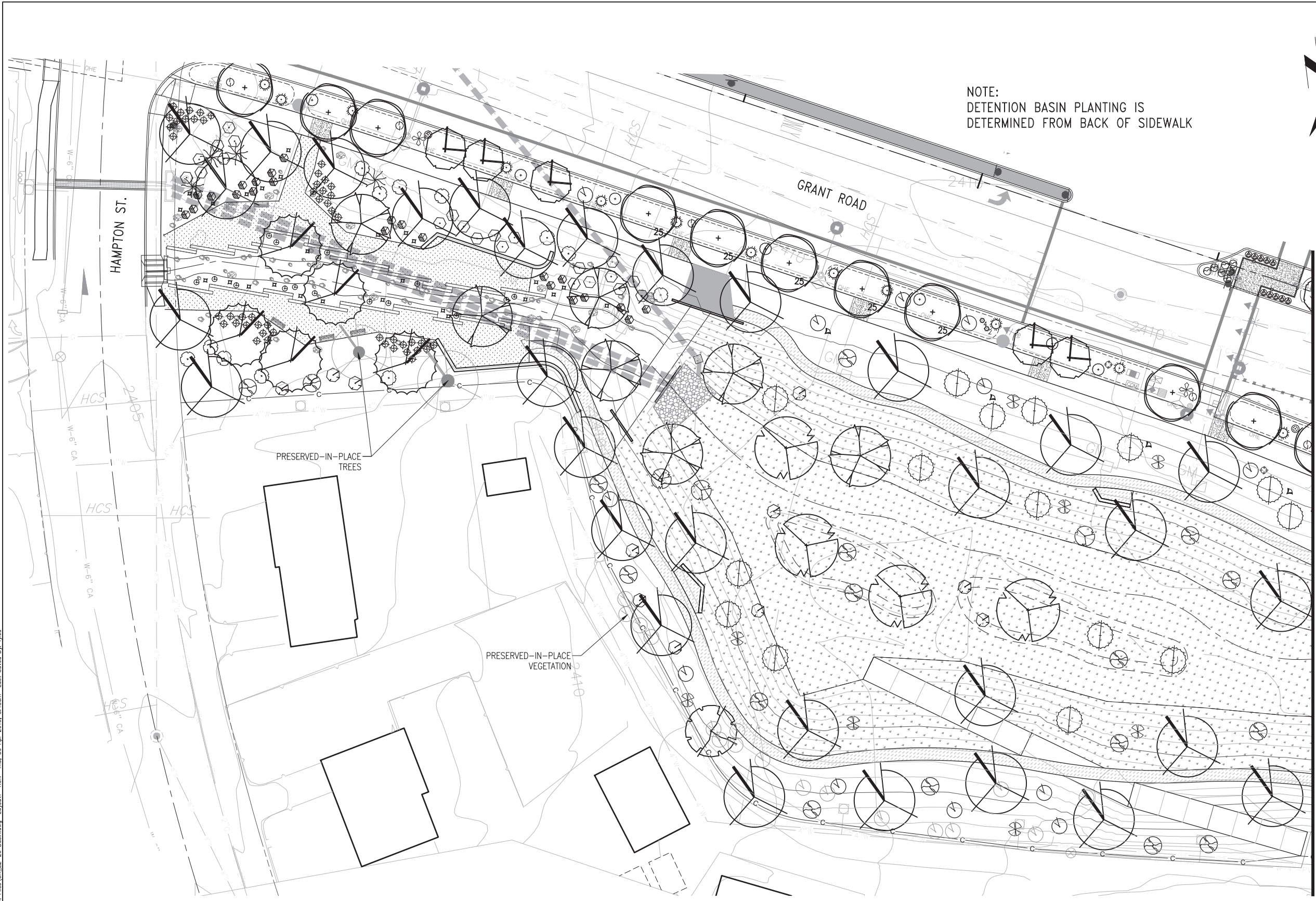


M:\Grant Road, Stone To Park-13904-Data\Sheet Files\QR.L2-26 Basin.dwg Layout1: RUN Thu, 30 Apr 2015, 8:15am Last Saved By: lyao



NOTE:
DETENTION BASIN PLANTING IS
DETERMINED FROM BACK OF SIDEWALK

MATCHLINE STA. 161+00
REFER TO SHEET P27

TREES	
SYMBOL	BOTANICAL NAME COMMON NAME
	<i>Acacia smallii</i> Sweet Acacia
	<i>Acacia greggii</i> Catclaw Acacia
	<i>Celtis reticulata</i> Western Hackberry
	<i>Cercidium microphyllum</i> Foothills Palo Verde
	<i>Chilopsis linearis</i> 'AZT' AZT Desert Willow
	<i>Olneya tesota</i> 'AZT' AZT Ironwood
	<i>Prosopis velutina</i> Native Velvet Mesquite

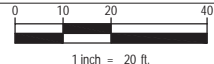
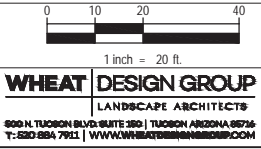
SHRUBS	
SYMBOL	BOTANICAL NAME COMMON NAME
	<i>Atriplex canescens</i> Quailbush
	<i>Baileya multiradiata</i> Desert Marigold
	<i>Bouteloua gracilis</i> Blue Grama
	<i>Celtis pallida</i> Desert Hackberry
	<i>Fouquieria splendens</i> Ocotillo
	<i>Justicia candicans</i> Red Justicia
	<i>Larrea tridentata</i> Creosote
	<i>Lycium andersonii</i> Wolfberry
	<i>Simmondsia chinensis</i> 'Vista' Compact Jojoba
	<i>Vauquelinia californica</i> Arizona Rosewood
	<i>Viguiera deltoidea</i> Goldeneye
	<i>Zinnia acerosa</i> Desert Zinnia

ACCENTS	
SYMBOL	BOTANICAL NAME COMMON NAME
	<i>Carnegiea gigantea</i> Saguaro
	<i>Dasylirion wheeleri</i> Desert Spoon
	<i>Ferocactus wislizenii</i> Fishhook Barrel
	<i>Opuntia engelmannii</i> Engelmann's Prickly Pear
	<i>Opuntia versicolor</i> Staghorn Cholla
	<i>Yucca rupicola</i> Twisted Leaf Yucca

SEED MIX	
SYMBOL	Refer to Sheet P02 for Seed Mix Composition

PLANTING PLAN - DETENTION BASIN

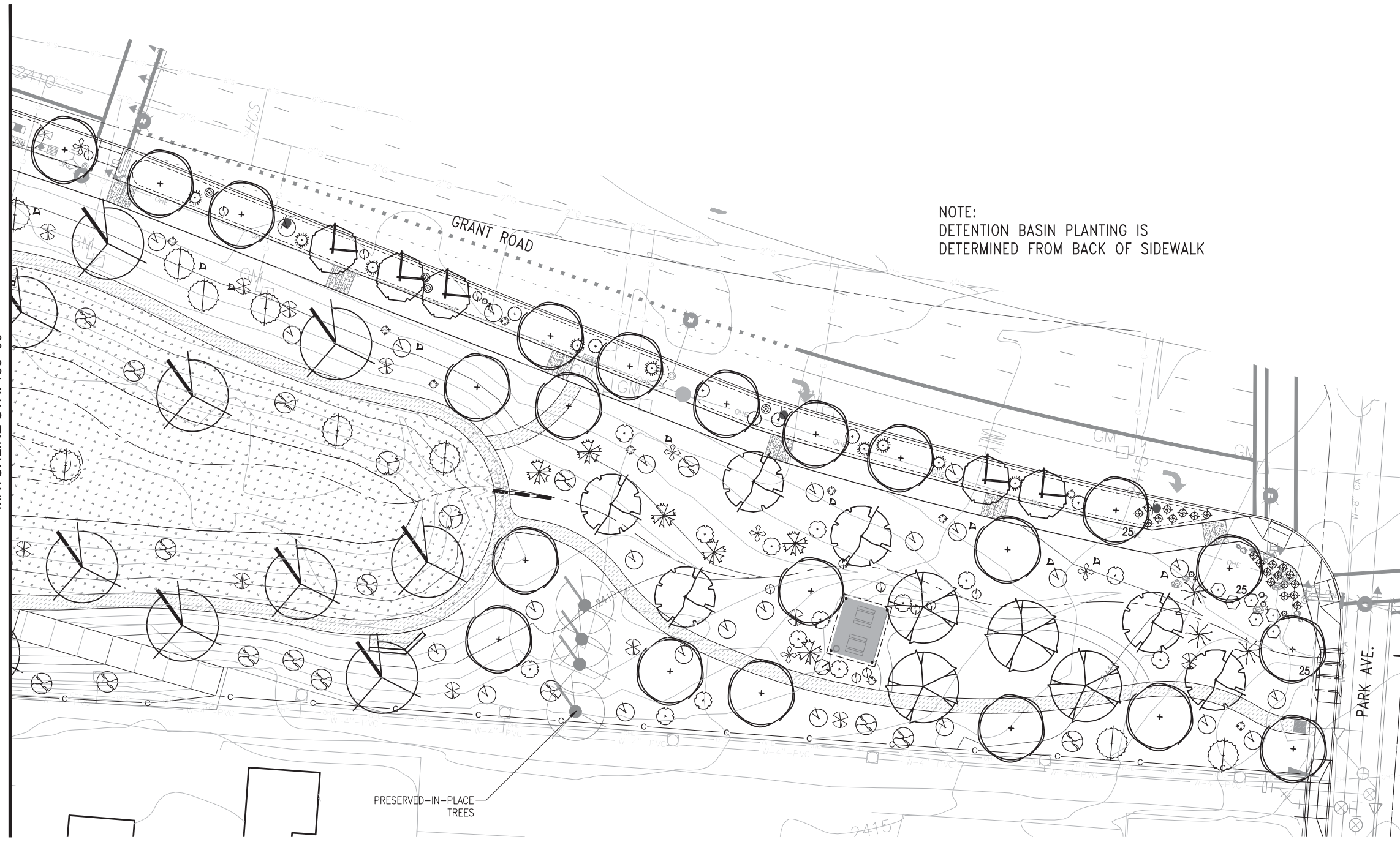
NO.	DATE	REVISION	BY	CHKD.	APPR.



90%
PRELIMINARY
NOT FOR
CONSTRUCTION

		DEPARTMENT OF TRANSPORTATION/ENGINEERING DIVISION		P26 OF P27
		GRANT ROAD STONE AVENUE TO PARK AVENUE		
DRWN. BY	CM, IO	04/30	REF. _____	303 OF 380
DSGN. BY	CM	04/30	SCALE: _____	
CHKD. BY	LM	04/30	PLAN NO. 1-2013-009	

REFER TO SHEET P26
MATCHLINE STA. 156+00



NOTE:
DETENTION BASIN PLANTING IS
DETERMINED FROM BACK OF SIDEWALK

TREES	
SYMBOL	BOTANICAL NAME COMMON NAME
	<i>Acacia smallii</i> Sweet Acacia
	<i>Acacia greggii</i> Catalaw Acacia
	<i>Celtis reticulata</i> Western Hackberry
	<i>Cercidium microphyllum</i> Foothills Palo Verde
	<i>Chilopsis linearis</i> 'AZT' AZT Desert Willow
	<i>Olneya tesota</i> 'AZT' AZT Ironwood
	<i>Prosopis velutina</i> Native Velvet Mesquite

SHRUBS	
SYMBOL	BOTANICAL NAME COMMON NAME
	<i>Atriplex canescens</i> Quailbush
	<i>Baileya multiradiata</i> Desert Marigold
	<i>Bouteloua gracilis</i> Blue Grama
	<i>Celtis pallida</i> Desert Hackberry
	<i>Fouquieria splendens</i> Ocotillo
	<i>Justicia candidans</i> Red Justicia
	<i>Larrea tridentata</i> Creosote
	<i>Lycium andersonii</i> Wolfberry
	<i>Simmondsia chinensis</i> 'Vista' Compact Jojoba
	<i>Vauquelinia californica</i> Arizona Rosewood
	<i>Viguiera deltoidea</i> Goldeneye
	<i>Zinnia acerosa</i> Desert Zinnia

ACCENTS	
SYMBOL	BOTANICAL NAME COMMON NAME
	<i>Carnegiea gigantea</i> Saguaro
	<i>Dasyliroon wheeleri</i> Desert Spoon
	<i>Ferocactus wislizenii</i> Fishhook Barrel
	<i>Opuntia engelmannii</i> Engelmann's Prickly Pear
	<i>Opuntia versicolor</i> Staghorn Cholla
	<i>Yucca rupicola</i> Twisted Leaf Yucca

SEED MIX	
SYMBOL	Refer to Sheet P02 for Seed Mix Composition

PLANTING PLAN - DETENTION BASIN

90%
PRELIMINARY
NOT FOR
CONSTRUCTION

DEPARTMENT OF TRANSPORTATION/ENGINEERING DIVISION

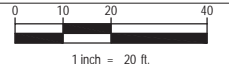
GRANT ROAD
STONE AVENUE TO PARK AVENUE



DRWN. BY CM, IO	04/30	REF. SCALE:	
DSGN. BY CM	04/30		
CHKD. BY LM	04/30	PLAN NO.	1-2013-009

P27
OF
P27
304
OF
380

NO.	DATE	REVISION	BY	CHKD.	APPR.



M:\Grant Road Stone To Park-13904-Data\Sheet Files\GR_L2-27_Basin.dwg Layout1 RUN Thu, 30 Apr 2015, 8:16am Last Saved By: lyao