

MATCHLINE STA 333+00.00
SEE SHEET PR 42

MATCHLINE STA 339+00.00
SEE SHEET PR 44

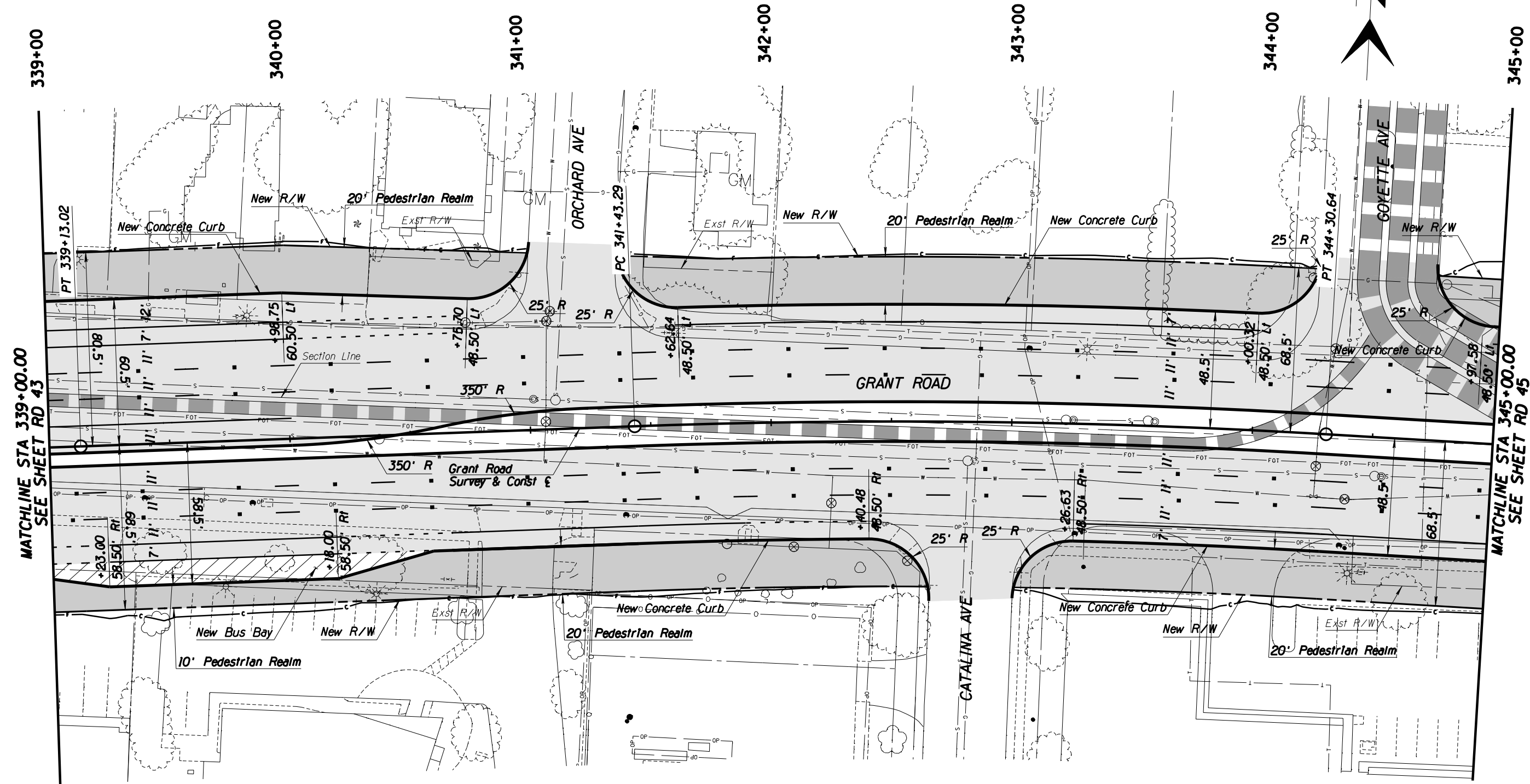


© 2009 KIMLEY-HORN AND ASSOCIATES, INC.
2210 East Fort Lowell Road, Suite 200
Tucson, Arizona 85719 (520) 615-9191

NO.	DATE	REVISION	BY	CHKD.	APPR.

PLANS ARE NOT FOR CONSTRUCTION

DEPARTMENT OF TRANSPORTATION/ENGINEERING DIVISION				PR43
GRANT ROAD PROFILE SHEET STA 333+00 TO STA 339+00				OF
	DSGN. BY J. DeBerry	11/09	REF.	SCALE: 1"=20' H
	DRWN. BY J. DeBerry	11/09		1"=4' V
	CHKD. BY C. Colson	11/09	PLAN NO.	113
				OF
				291



MATCHLINE STA 339+00.00
SEE SHEET RD 43

MATCHLINE STA 345+00.00
SEE SHEET RD 45

General Notes

1. See sheet PR 44 for PGL, curb, and centerline profiles.
2. Pavement Markings shown as a reference ONLY.
3. See UT sheets for utility plans.

Legend

- AC Pvmt
- Pedestrian Realm
- PCC Pvmt



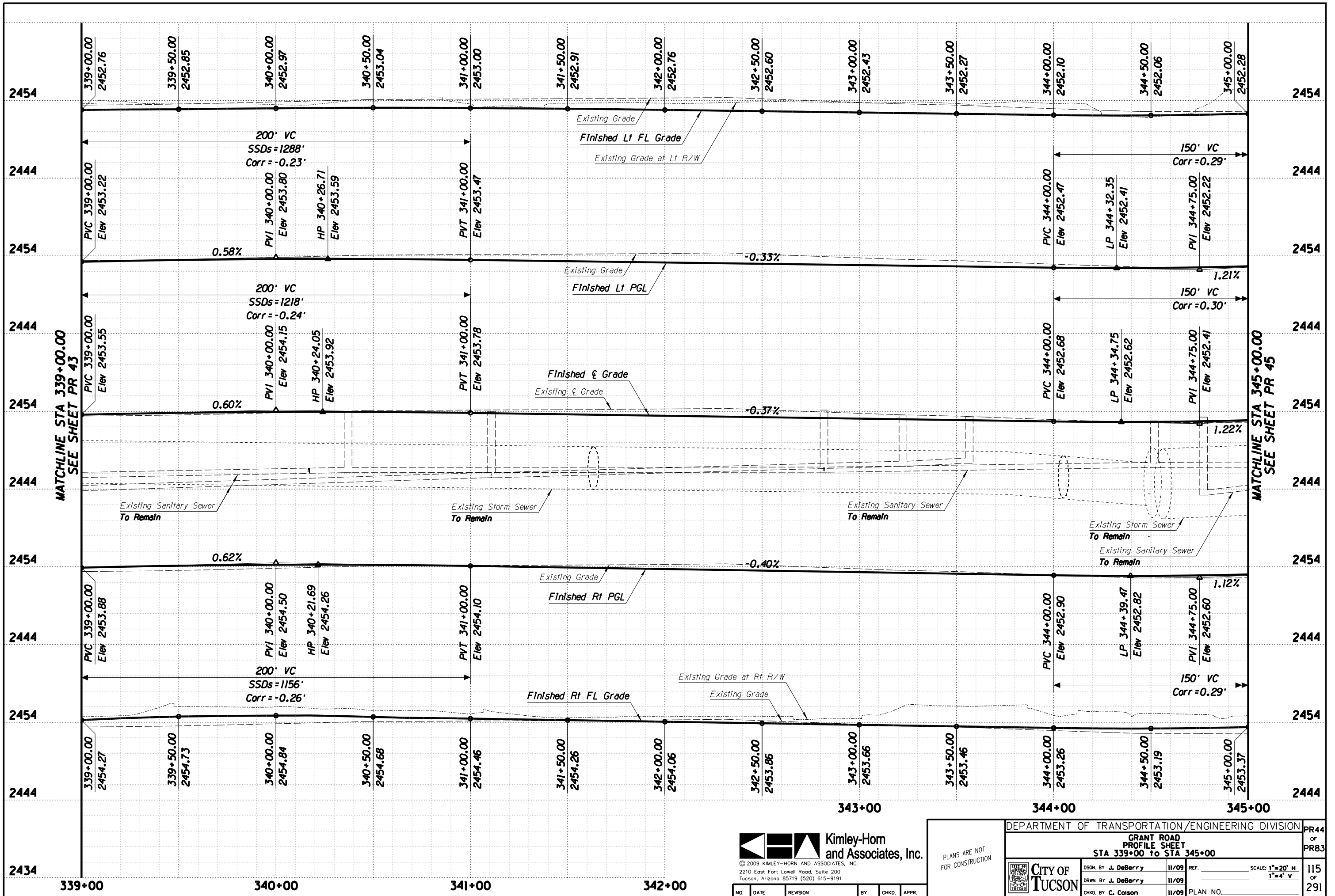
© 2009 KIMLEY-HORN AND ASSOCIATES, INC.
2210 East Fort Lowell Road, Suite 200
Tucson, Arizona 85719 (520) 615-9191

PLANS ARE NOT
FOR CONSTRUCTION

DEPARTMENT OF TRANSPORTATION/ENGINEERING DIVISION		RD44
GRANT ROAD PLAN SHEET STA 339+00 TO STA 345+00		OF RD83
CITY OF TUCSON	DSGN. BY B. Beenken 11/09	REF. _____ SCALE: 1"=20' H.
	DRWN. BY M. Huggins 11/09	_____
	CHKD. BY C. Colson 11/09	PLAN NO. _____

NO.	DATE	REVISION	BY	CHKD.	APPR.

114
OF
291

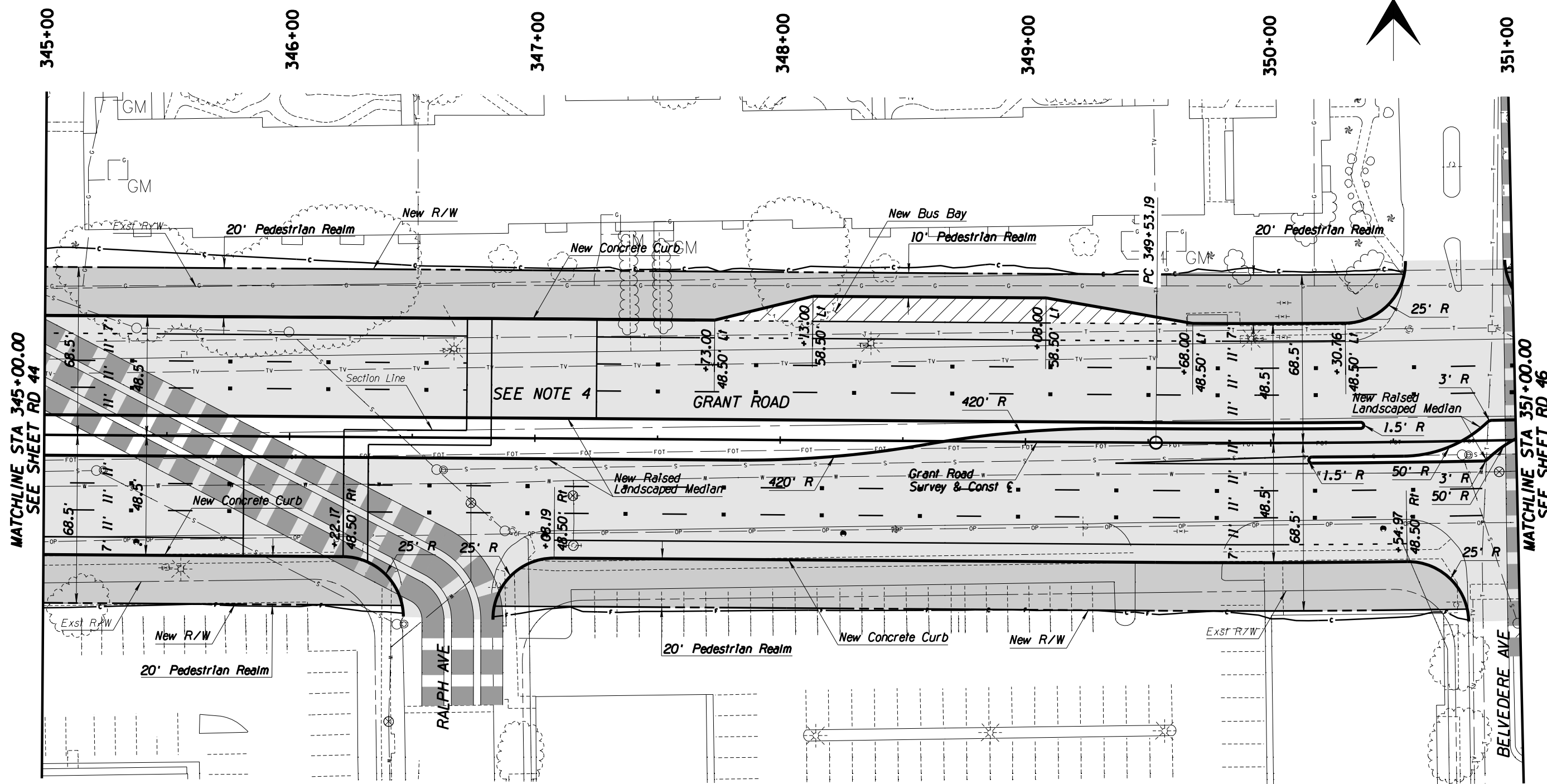


Kimley-Horn and Associates, Inc.
 © 2009 KIMLEY-HORN AND ASSOCIATES, INC.
 2210 East Fort Lowell Road, Suite 200
 Tucson, Arizona 85719 (520) 615-9191

PLANS ARE NOT FOR CONSTRUCTION

DEPARTMENT OF TRANSPORTATION/ENGINEERING DIVISION				PR44
GRANT ROAD PROFILE SHEET				OF
STA 339+00 TO STA 345+00				PR83
	DSGN. BY J. DeBerry	11/09	REF.	SCALE: 1"=20' H
	DRWN. BY J. DeBerry	11/09		1"=4' V
	CHKD. BY C. Colson	11/09	PLAN NO.	115 OF 291

NO.	DATE	REVISION	BY	CHKD.	APPR.



MATCHLINE STA 345+00.00
SEE SHEET RD 44

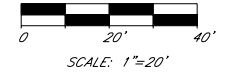
MATCHLINE STA 351+00.00
SEE SHEET RD 46

General Notes

1. See sheet PR 45 for PGL, curb, and centerline profiles.
2. Pavement Markings shown as a reference ONLY.
3. See UT sheets for utility plans.
4. See page 22 of "Design Criteria Memo" for Pelican Pedestrian Crossing detail.

Legend

- AC Pvmt
- Pedestrian Realm
- PCC Pvmt

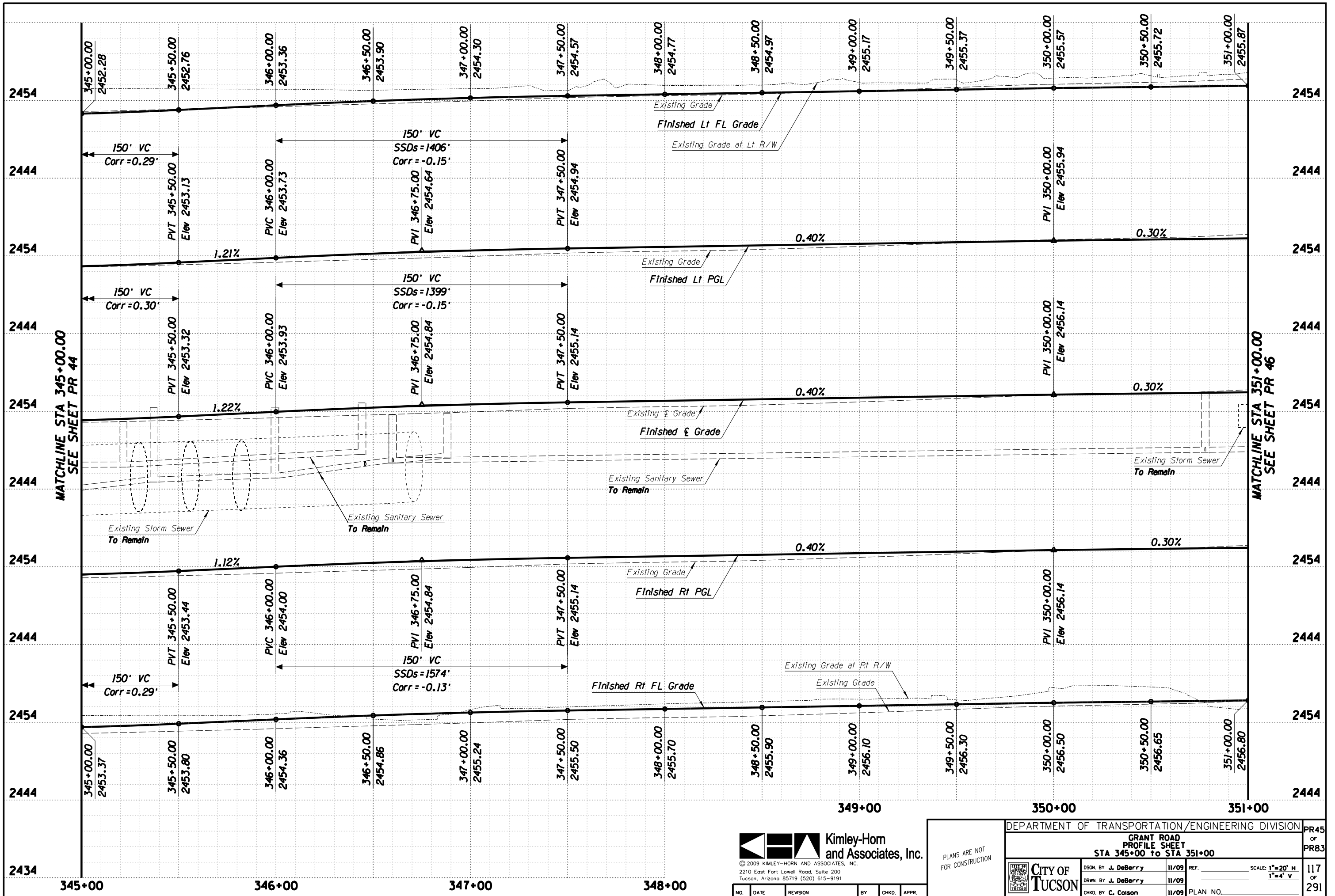


© 2009 KIMLEY-HORN AND ASSOCIATES, INC.
2210 East Fort Lowell Road, Suite 200
Tucson, Arizona 85719 (520) 615-9191

NO.	DATE	REVISION	BY	CHKD.	APPR.

PLANS ARE NOT FOR CONSTRUCTION

DEPARTMENT OF TRANSPORTATION/ENGINEERING DIVISION				RD45
GRANT ROAD PLAN SHEET STA 345+00 TO STA 351+00				OF RD83
 CITY OF TUCSON	DSGN. BY B. Beenken	11/09	REF.	SCALE: 1"=20' H.
	DRWN. BY M. Huggins	11/09		
	CHKD. BY C. Colson	11/09	PLAN NO.	
				116 OF 291

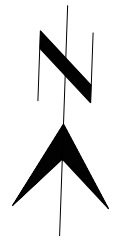


Kimley-Horn and Associates, Inc.
 © 2009 KIMLEY-HORN AND ASSOCIATES, INC.
 2210 East Fort Lowell Road, Suite 200
 Tucson, Arizona 85719 (520) 615-9191

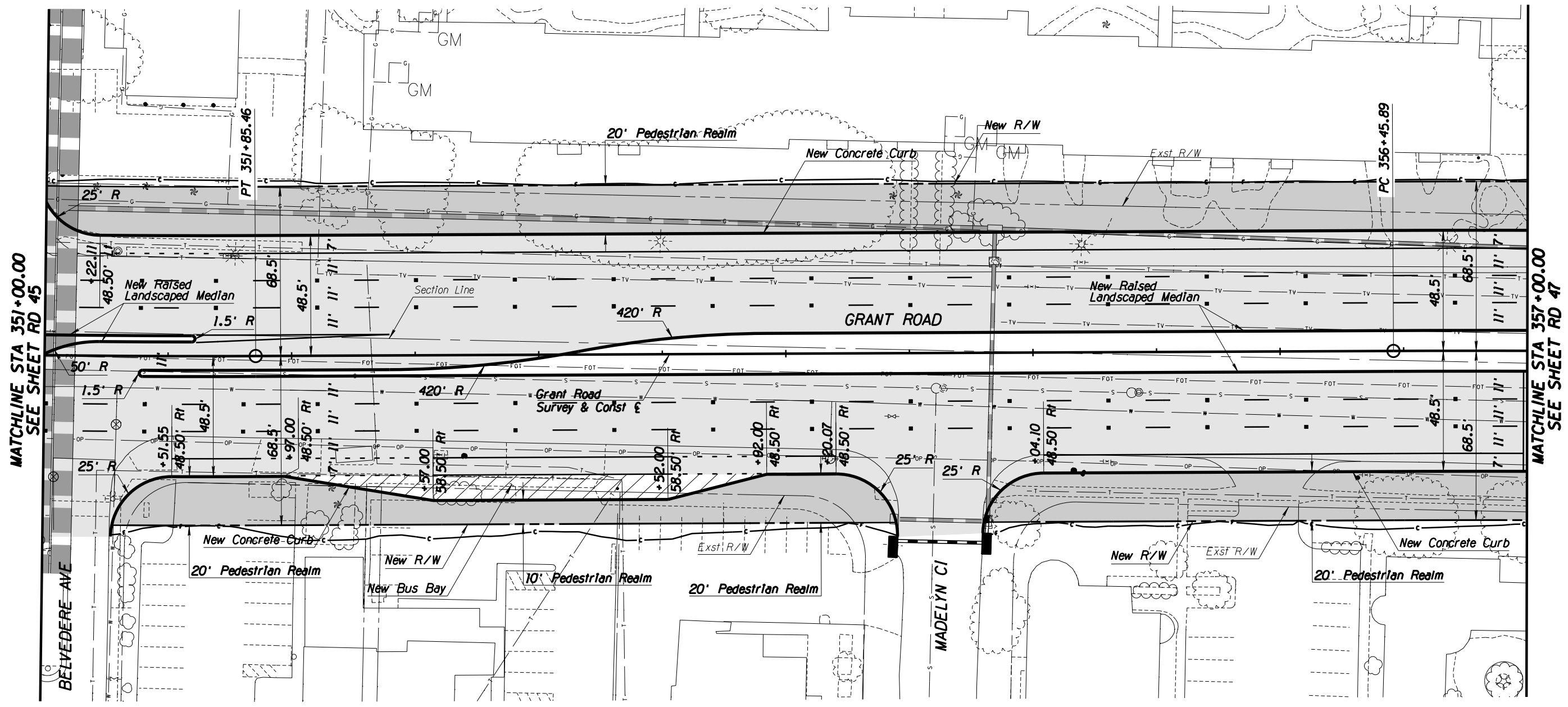
PLANS ARE NOT FOR CONSTRUCTION

DEPARTMENT OF TRANSPORTATION/ENGINEERING DIVISION		PR45
GRANT ROAD PROFILE SHEET		OF PR83
STA 345+00 to STA 351+00		
CITY OF TUCSON	DSGN. BY J. DeBerry 11/09	REF. _____
	DRWN. BY J. DeBerry 11/09	SCALE: 1"=20' H 1"=4' V
	CHKD. BY C. Colson 11/09	PLAN NO. _____
		117 OF 291

NO.	DATE	REVISION	BY	CHKD.	APPR.



351+00 352+00 353+00 354+00 355+00 356+00 357+00



MATCHLINE STA 351+00.00
SEE SHEET RD 45

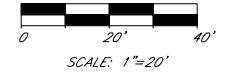
MATCHLINE STA 357+00.00
SEE SHEET RD 47

General Notes

1. See sheet PR 46 for PGL, curb, and centerline profiles.
2. Pavement Markings shown as a reference ONLY.
3. See UT sheets for utility plans.
4. See SD sheets for new storm drain plan and profiles.

Legend

- AC Pvmt
- Pedestrian Realm
- PCC Pvmt

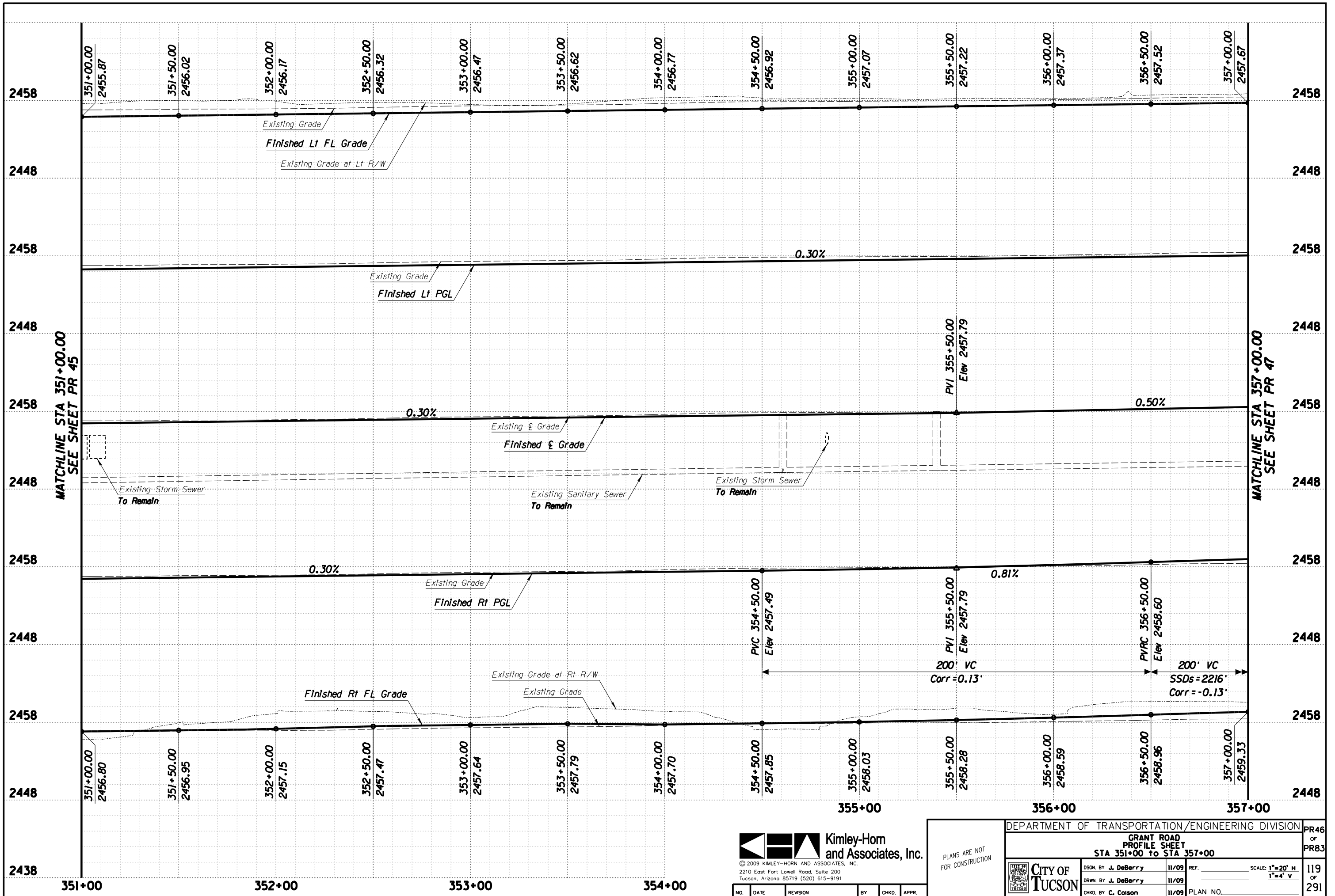


© 2009 KIMLEY-HORN AND ASSOCIATES, INC.
2210 East Fort Lowell Road, Suite 200
Tucson, Arizona 85719 (520) 615-9191

NO.	DATE	REVISION	BY	CHKD.	APPR.

PLANS ARE NOT FOR CONSTRUCTION

DEPARTMENT OF TRANSPORTATION/ENGINEERING DIVISION				RD46
GRANT ROAD PLAN SHEET STA 351+00 TO STA 357+00				OF RD83
	DSGN. BY B. Beenken	11/09	REF.	SCALE: 1"=20' H.
	DRWN. BY M. Huggins	11/09		
	CHKD. BY C. Colson	11/09	PLAN NO.	
				118 OF 291

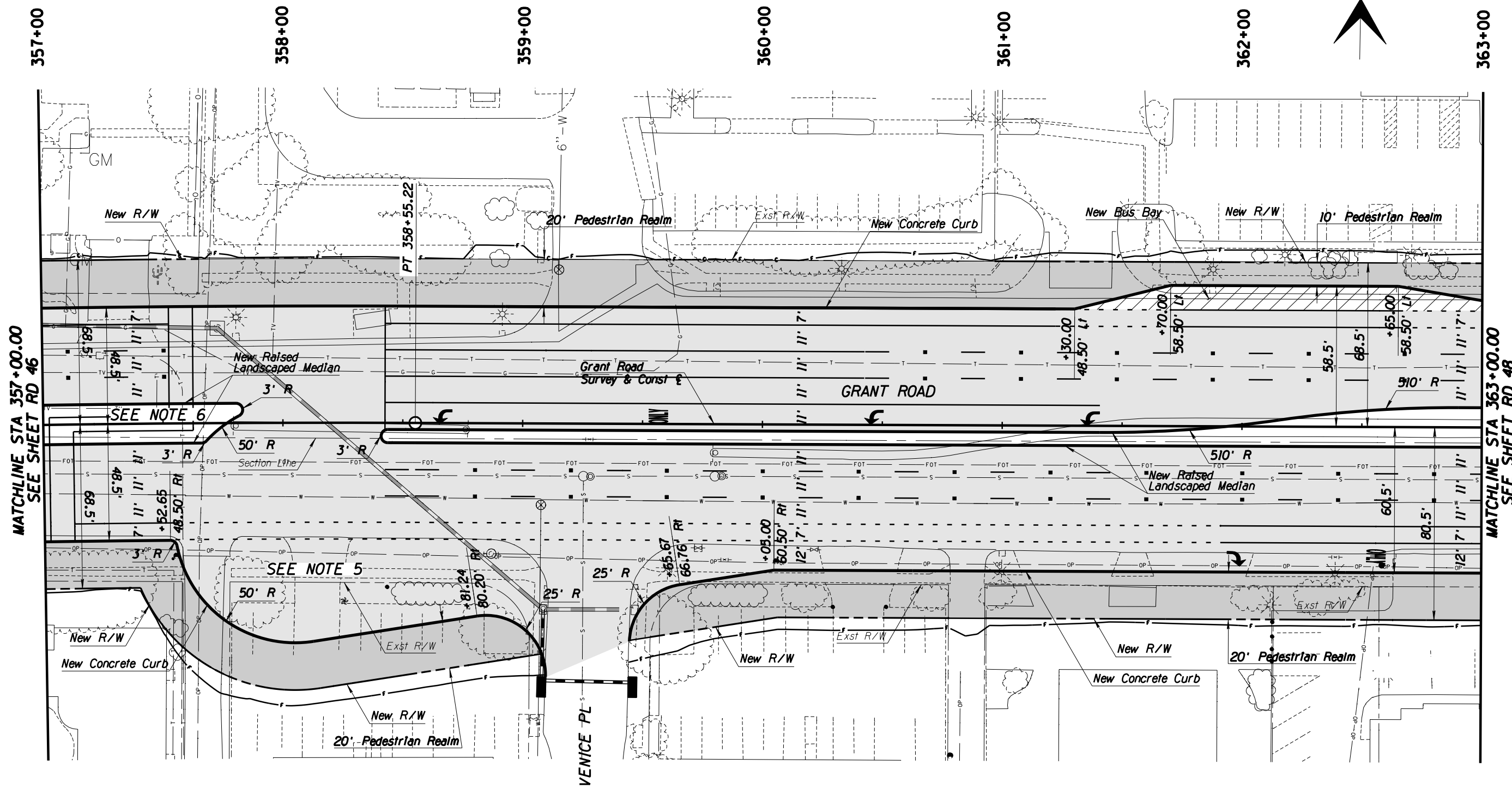


Kimley-Horn and Associates, Inc.
 © 2009 KIMLEY-HORN AND ASSOCIATES, INC.
 2210 East Fort Lowell Road, Suite 200
 Tucson, Arizona 85719 (520) 615-9191

PLANS ARE NOT FOR CONSTRUCTION

DEPARTMENT OF TRANSPORTATION/ENGINEERING DIVISION				PR46
GRANT ROAD PROFILE SHEET				OF
STA 351+00 TO STA 357+00				PR83
	DSGN. BY J. DeBerry	11/09	REF.	SCALE: 1"=20' H
	DRWN. BY J. DeBerry	11/09		1"=4' V
	CHKD. BY C. Colson	11/09	PLAN NO.	
				119 OF 291

NO.	DATE	REVISION	BY	CHKD.	APPR.



MATCHLINE STA 357+00.00
SEE SHEET RD 46

MATCHLINE STA 363+00.00
SEE SHEET RD 48

General Notes

1. See sheet PR 47 for PGL, curb, and centerline profiles.
2. Pavement Markings shown as a reference ONLY.
3. See UT sheets for utility plans.
4. See SD sheets for new storm drain plan and profiles.
5. See page 18 of "Design Criteria Memo" for Indirect Left Turn Around detail.
6. See page 22 of "Design Criteria Memo" for Pelican Pedestrian Crossing detail.

Legend

- AC Pvmt
- Pedestrian Realm
- PCC Pvmt

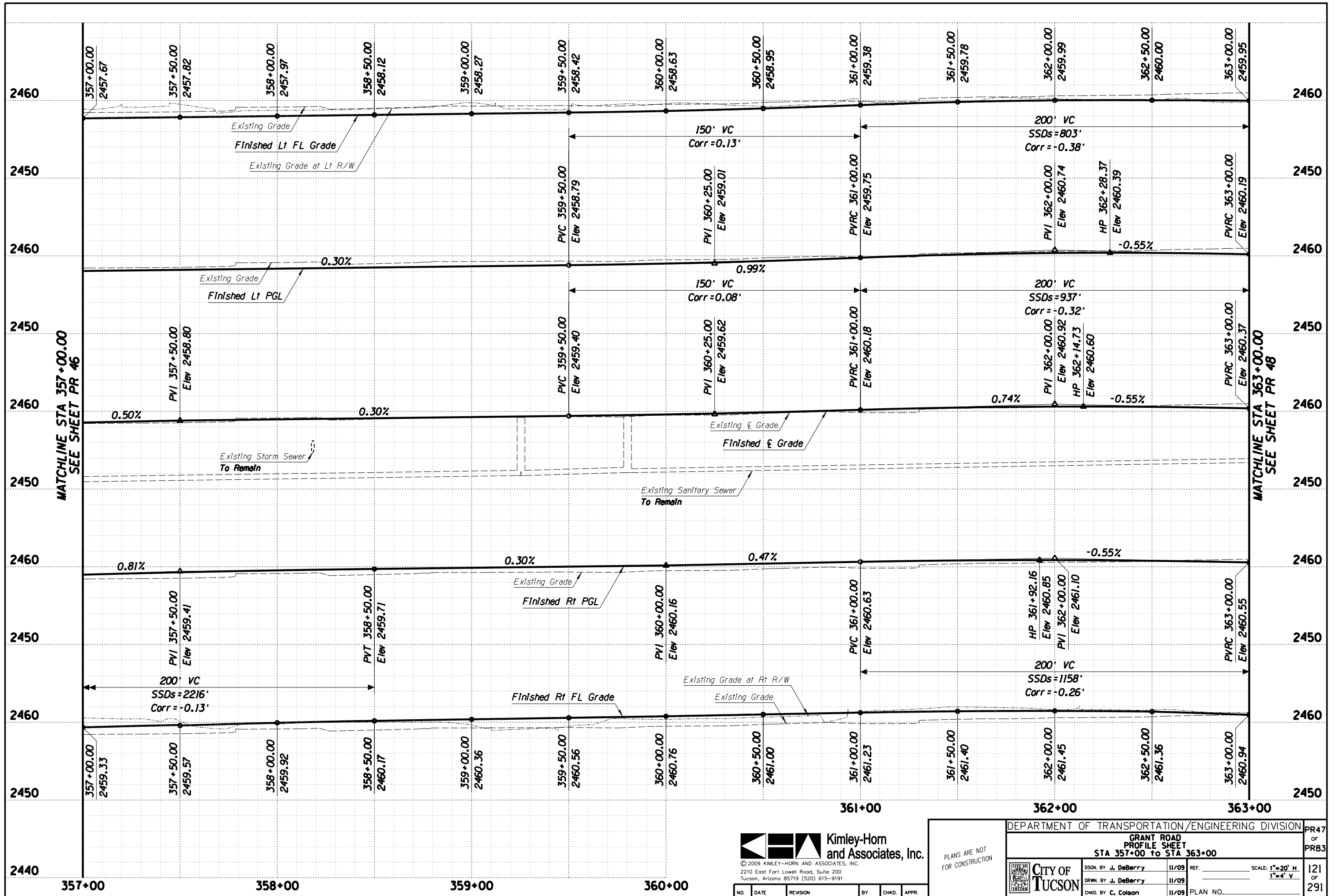


© 2009 KIMLEY-HORN AND ASSOCIATES, INC.
2210 East Fort Lowell Road, Suite 200
Tucson, Arizona 85719 (520) 615-9191

NO.	DATE	REVISION	BY	CHKD.	APPR.

PLANS ARE NOT FOR CONSTRUCTION

DEPARTMENT OF TRANSPORTATION/ENGINEERING DIVISION		RD47
GRANT ROAD PLAN SHEET STA 357+00 TO STA 363+00		OF RD83
	DSGN. BY B. Beenken 11/09	REF. _____ SCALE: 1"=20' H.
	DRWN. BY M. Huggins 11/09	_____
	CHKD. BY C. Colson 11/09	PLAN NO. _____
		120 OF 291



MATCHLINE STA 357+00.00
SEE SHEET PR 46

MATCHLINE STA 363+00.00
SEE SHEET PR 48

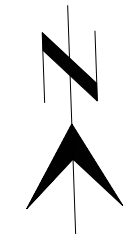


© 2009 KIMLEY-HORN AND ASSOCIATES, INC.
2210 East Fort Lowell Road, Suite 200
Tucson, Arizona 85719 (520) 615-9191

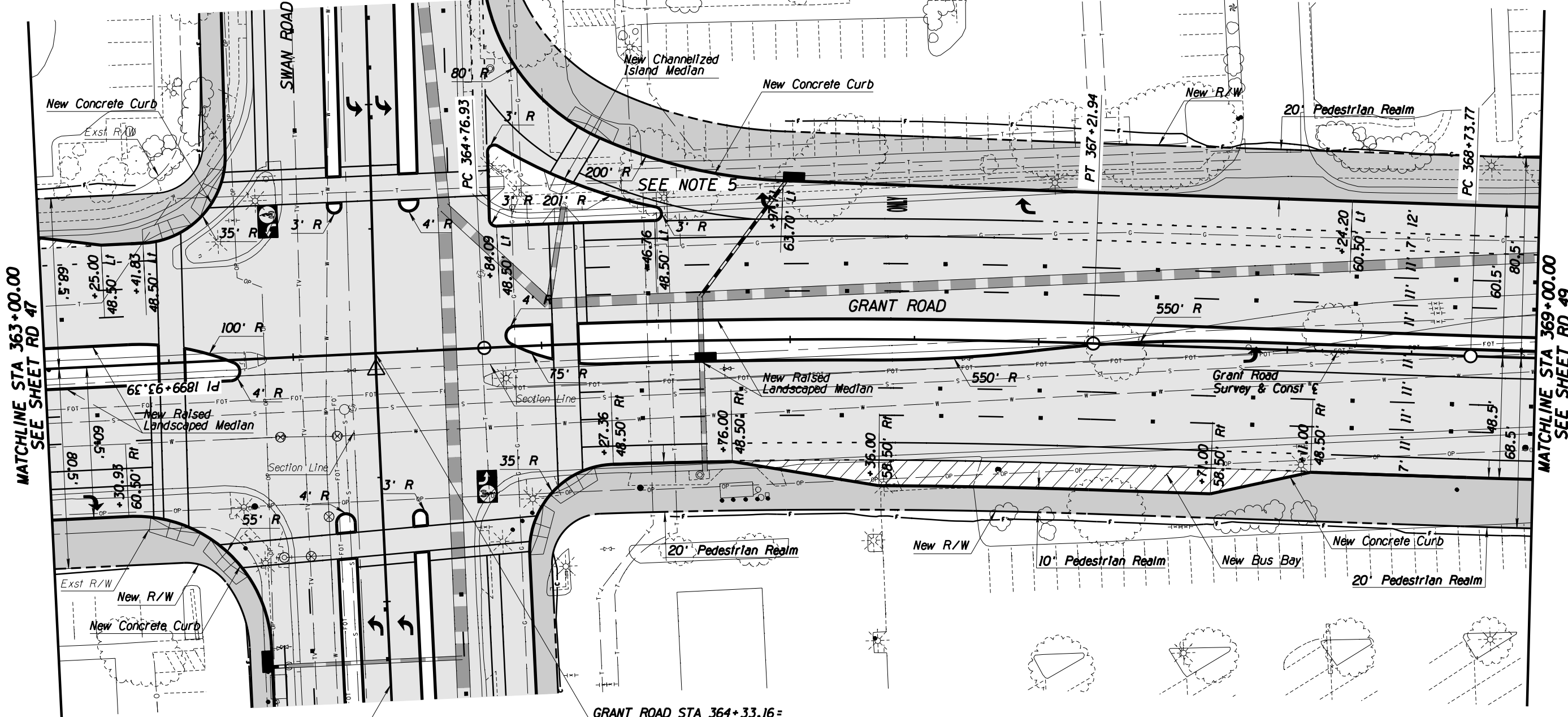
NO.	DATE	REVISION	BY	CHKD.	APPR.

PLANS ARE NOT FOR CONSTRUCTION

DEPARTMENT OF TRANSPORTATION/ENGINEERING DIVISION				PR47
GRANT ROAD PROFILE SHEET STA 357+00 TO STA 363+00				OF
CITY OF TUCSON				PR83
DSGN. BY J. DeBerry	11/09	REF.	SCALE: 1"=20' H 1"=4' V	121
DRWN. BY J. DeBerry	11/09	PLAN NO.		OF
CHKD. BY C. Colson	11/09			291



363+00 365+00 366+00 367+00 368+00 369+00



MATCHLINE STA 363+00.00
SEE SHEET RD 47

MATCHLINE STA 369+00.00
SEE SHEET RD 49

GRANT ROAD STA 364+33.16 =
SWAN ROAD STA 1900+00.00

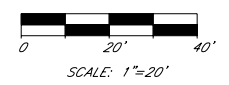
Swan Road
Survey & Const E

General Notes

1. See sheet PR 48 for PGL, curb, and centerline profiles.
2. Pavement Markings shown as a reference ONLY.
3. See UT sheets for utility plans.
4. See SD sheets for new storm drain plan and profiles.
5. See page 19 of "Design Criteria Memo" for Channelized Right Turn Lane detail.

Legend

- AC Pvmt
- Pedestrian Realm
- PCC Pvmt

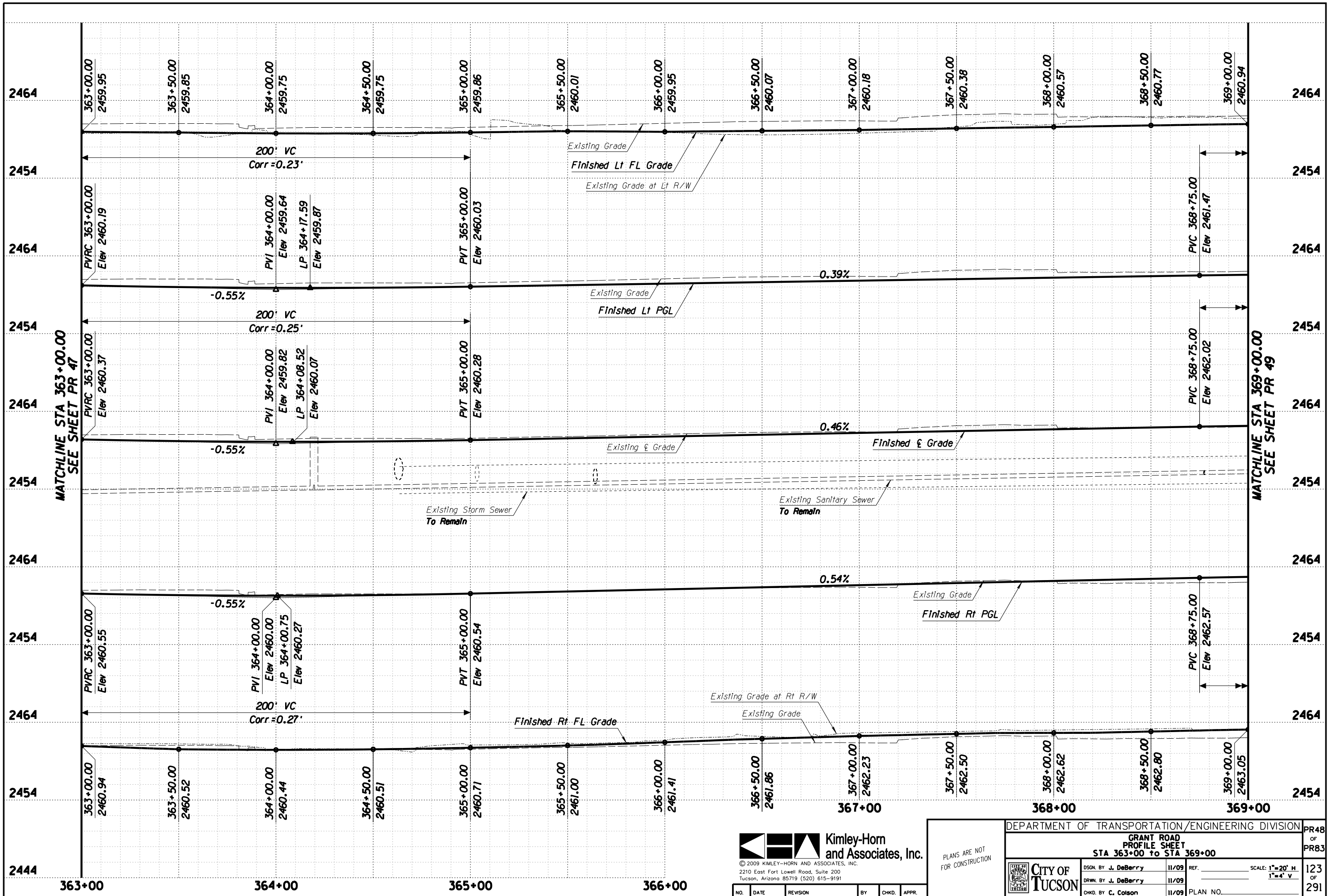


© 2009 KIMLEY-HORN AND ASSOCIATES, INC.
2210 East Fort Lowell Road, Suite 200
Tucson, Arizona 85719 (520) 615-9191

NO.	DATE	REVISION	BY	CHKD.	APPR.

PLANS ARE NOT
FOR CONSTRUCTION

DEPARTMENT OF TRANSPORTATION/ENGINEERING DIVISION		RD48
GRANT ROAD PLAN SHEET STA 363+00 TO STA 369+00		OF RD83
	DSGN. BY B. Beenken 11/09	SCALE: 1"=20' H. 122 OF 291
	DRWN. BY M. Huggins 11/09	
	CHKD. BY C. Colson 11/09	
PLAN NO.		



MATCHLINE STA 363+00.00
SEE SHEET PR 47

MATCHLINE STA 369+00.00
SEE SHEET PR 49



© 2009 KIMLEY-HORN AND ASSOCIATES, INC.
2210 East Fort Lowell Road, Suite 200
Tucson, Arizona 85719 (520) 615-9191

NO.	DATE	REVISION	BY	CHKD.	APPR.

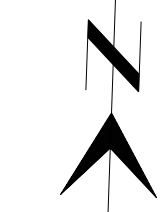
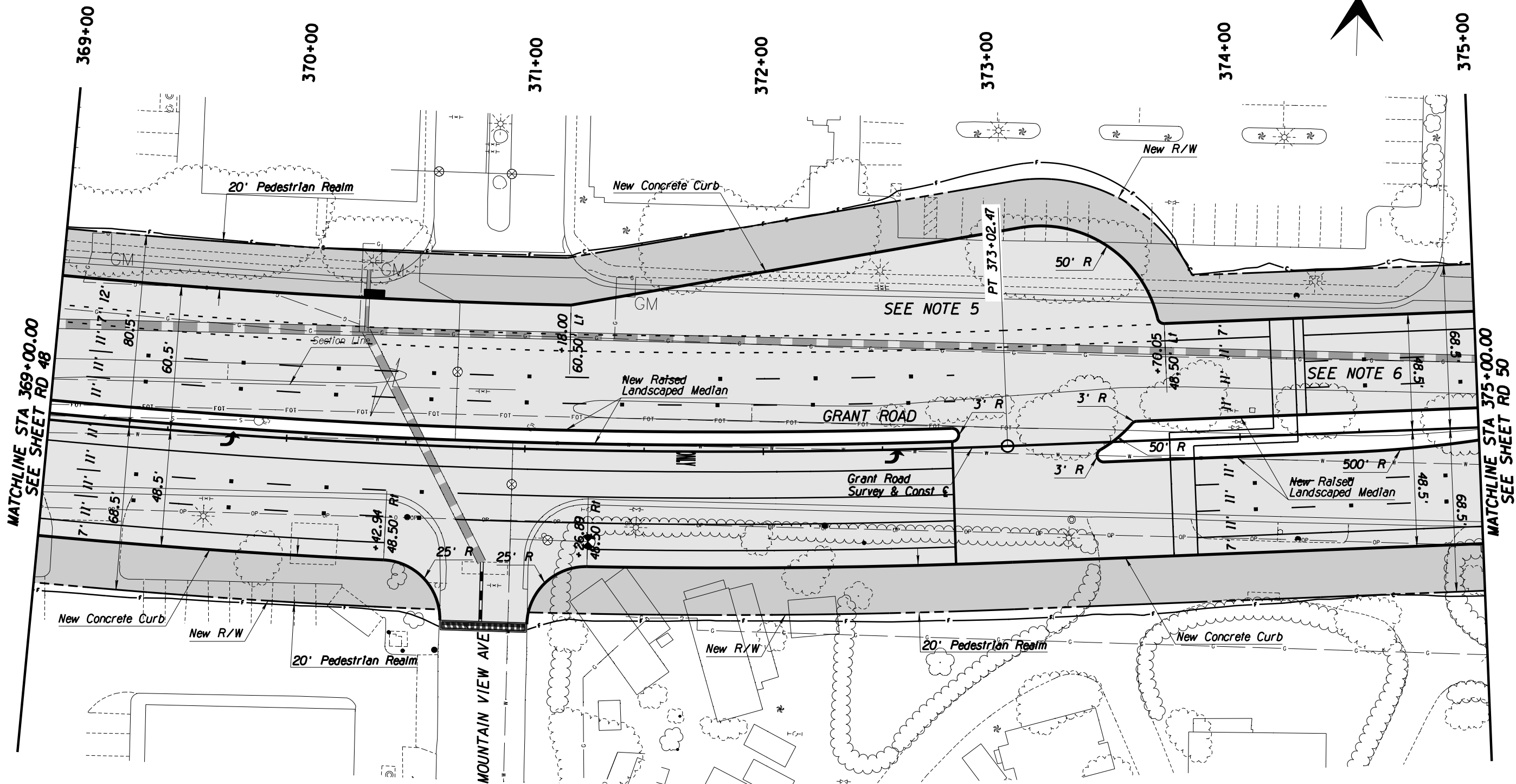
PLANS ARE NOT FOR CONSTRUCTION

DEPARTMENT OF TRANSPORTATION/ENGINEERING DIVISION

GRANT ROAD
PROFILE SHEET
STA 363+00 TO STA 369+00

	DSN. BY J. DeBerry 11/09	REF.	SCALE: 1"=20' H 1"=4' V	123 OF 291
	DRWN. BY J. DeBerry 11/09	PLAN NO.		
	CHKD. BY C. Colson 11/09			

PR48
OF
PR83



MATCHLINE STA 369+00.00
SEE SHEET RD 48

MATCHLINE STA 375+00.00
SEE SHEET RD 50

General Notes

1. See sheet PR 49 for PGL, curb, and centerline profiles.
2. Pavement Markings shown as a reference ONLY.
3. See UT sheets for utility plans.
4. See SD sheets for new storm drain plan and profiles.
5. See page 18 of "Design Criteria Memo" for Indirect Left Turn Around detail.
6. See page 22 of "Design Criteria Memo" for Pelican Pedestrian Crossing detail.

Legend

- AC Pvmt
- Pedestrian Realm
- PCC Pvmt

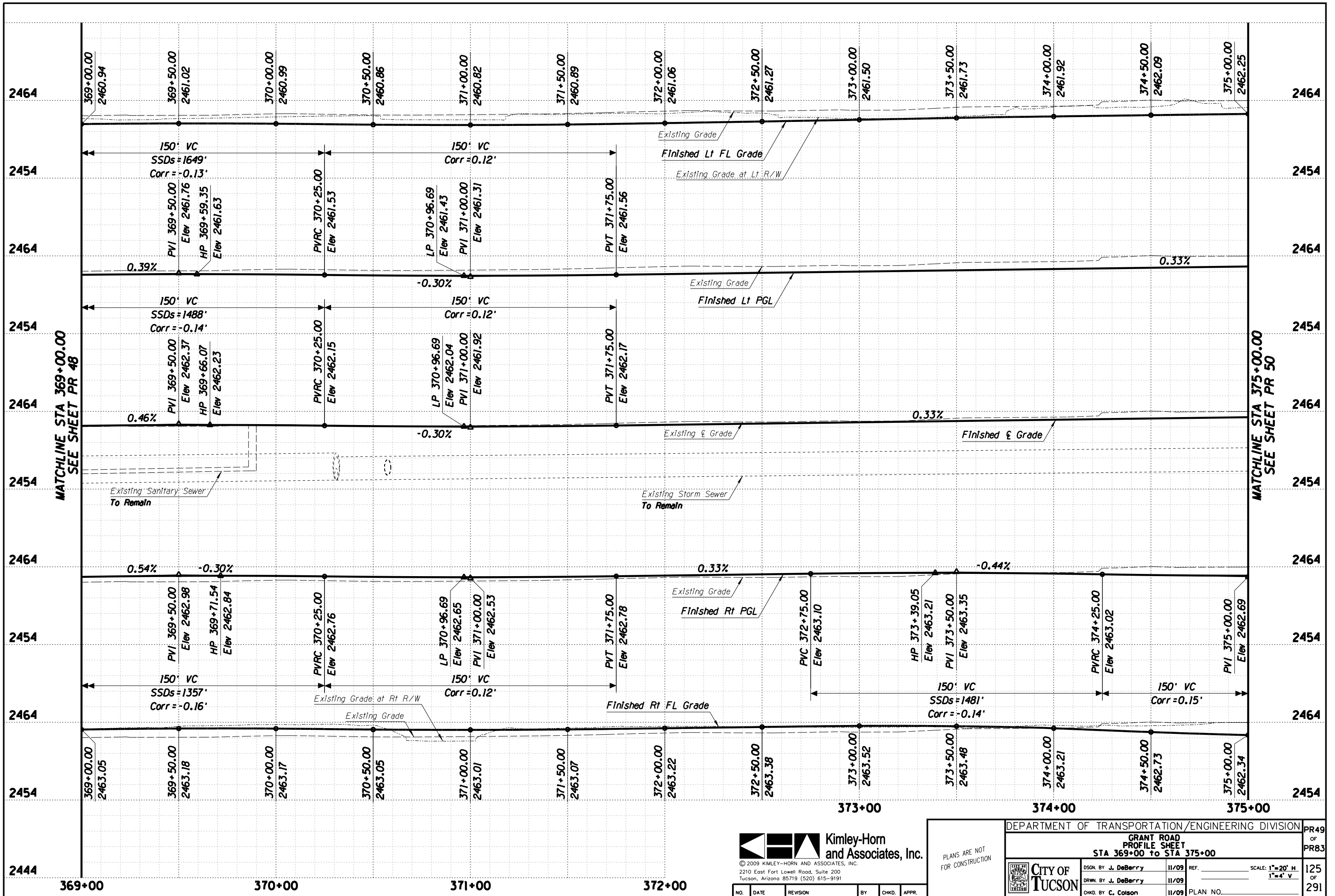


© 2009 KIMLEY-HORN AND ASSOCIATES, INC.
2210 East Fort Lowell Road, Suite 200
Tucson, Arizona 85719 (520) 615-9191

NO.	DATE	REVISION	BY	CHKD.	APPR.

PLANS ARE NOT FOR CONSTRUCTION

DEPARTMENT OF TRANSPORTATION/ENGINEERING DIVISION		RD49
GRANT ROAD PLAN SHEET STA 369+00 TO STA 375+00		OF RD83
	DSGN. BY B. Beenken 11/09	SCALE: 1"=20' H. 124 OF 291
	DRWN. BY M. Huggins 11/09	
	CHKD. BY C. Colson 11/09	
PLAN NO.		

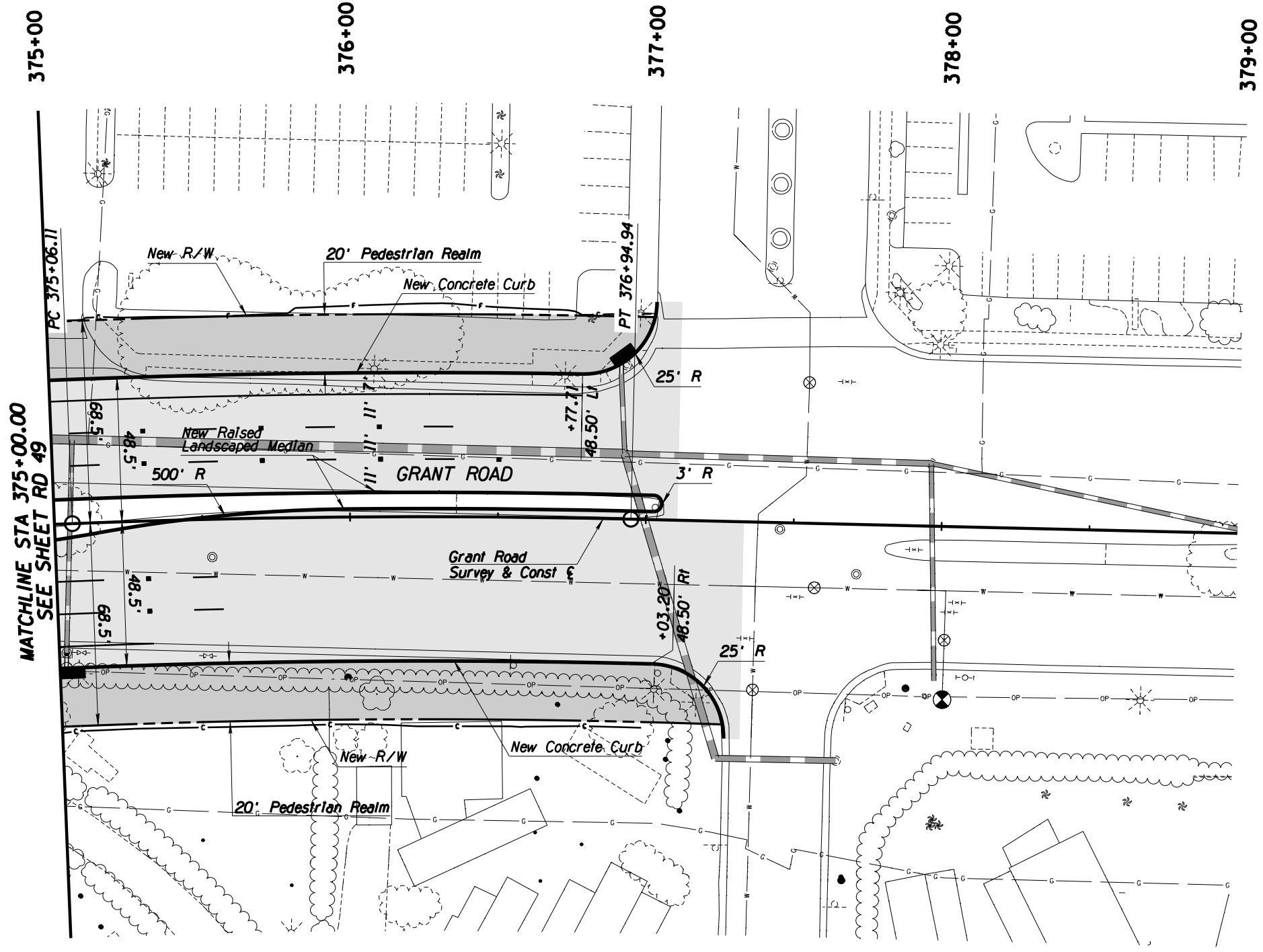
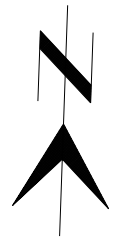


Kimley-Horn and Associates, Inc.
 © 2009 KIMLEY-HORN AND ASSOCIATES, INC.
 2210 East Fort Lowell Road, Suite 200
 Tucson, Arizona 85719 (520) 615-9191

PLANS ARE NOT FOR CONSTRUCTION

DEPARTMENT OF TRANSPORTATION/ENGINEERING DIVISION		PR49
GRANT ROAD PROFILE SHEET		OF
STA 369+00 TO STA 375+00		PR83
CITY OF TUCSON	DSGN. BY J. DeBerry 11/09	SCALE: 1"=20' H 1"=4' V
	DRWN. BY J. DeBerry 11/09	125
	CHKD. BY C. Colson 11/09	OF
	PLAN NO.	291

NO.	DATE	REVISION	BY	CHKD.	APPR.

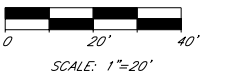


General Notes

1. See sheet PR 50 for PGL, curb, and centerline profiles.
2. Pavement Markings shown as a reference ONLY.
3. See UT sheets for utility plans.
4. See SD sheets for new storm drain plan and profiles.

Legend

- AC Pvmt
- Pedestrian Realm
- PCC Pvmt

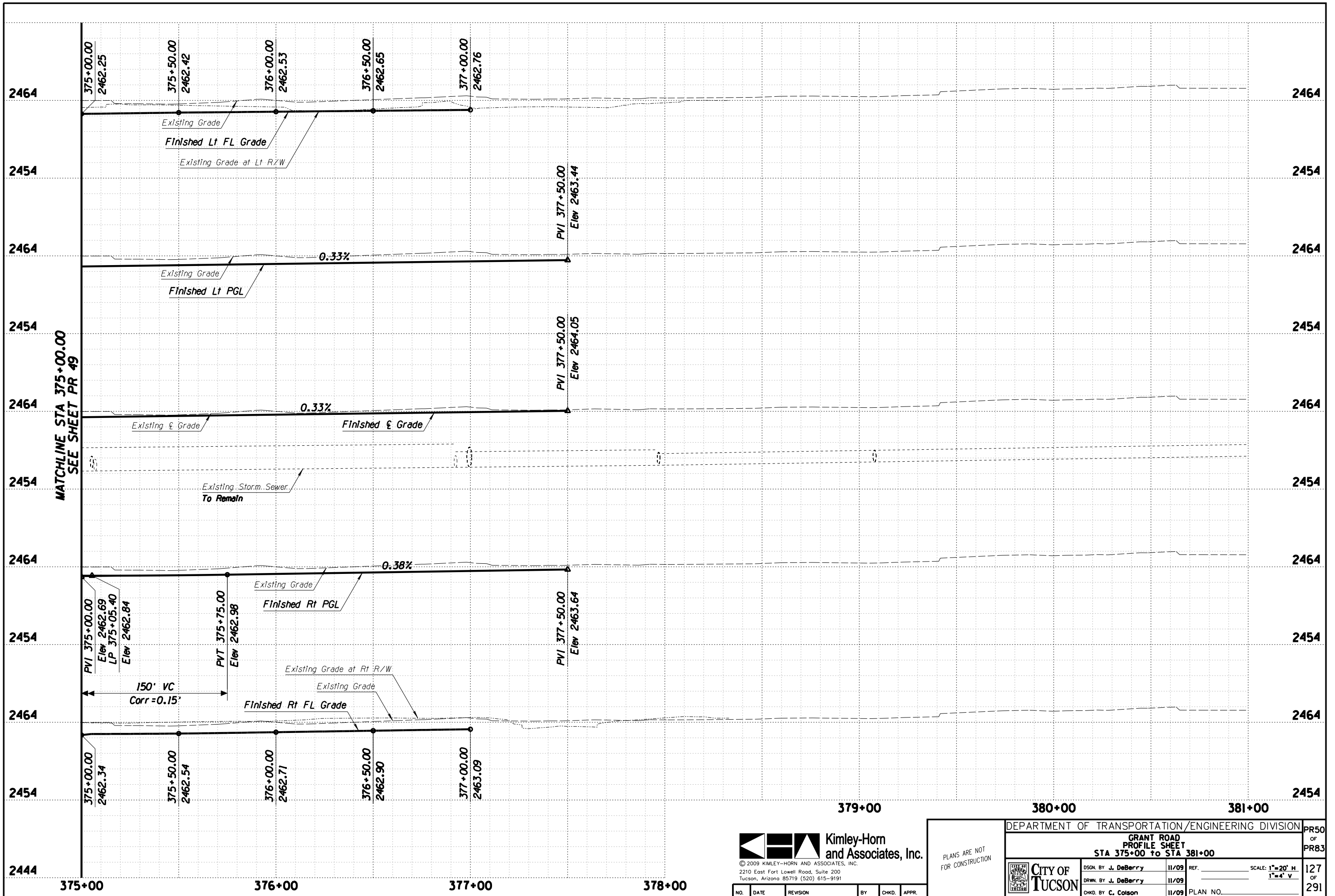


© 2009 KIMLEY-HORN AND ASSOCIATES, INC.
 2210 East Fort Lowell Road, Suite 200
 Tucson, Arizona 85719 (520) 615-9191

NO.	DATE	REVISION	BY	CHKD.	APPR.

PLANS ARE NOT FOR CONSTRUCTION

DEPARTMENT OF TRANSPORTATION/ENGINEERING DIVISION		RD50
GRANT ROAD PLAN SHEET STA 375+00 to STA 379+00		OF RD83
	DSGN. BY B. Beenken 11/09	REF. _____ SCALE: 1"=20' H.
	DRWN. BY M. Huggins 11/09	_____
	CHKD. BY C. Colson 11/09	PLAN NO. _____
		126 OF 291



MATCHLINE STA 375+00.00
SEE SHEET PR 49

Kimley-Horn and Associates, Inc.
 © 2009 KIMLEY-HORN AND ASSOCIATES, INC.
 2210 East Fort Lowell Road, Suite 200
 Tucson, Arizona 85719 (520) 615-9191

PLANS ARE NOT FOR CONSTRUCTION

DEPARTMENT OF TRANSPORTATION/ENGINEERING DIVISION		PR50
GRANT ROAD PROFILE SHEET STA 375+00 to STA 381+00		OF PR83
 CITY OF TUCSON	DSGN. BY J. DeBerry 11/09	REF. _____ SCALE: 1"=20' H 1"=4' V
	DRWN. BY J. DeBerry 11/09	127
	CHKD. BY C. Colson 11/09	OF 291
PLAN NO. _____		

NO.	DATE	REVISION	BY	CHKD.	APPR.