

Kimley-Horn and Associates, Inc.
 © 2009 KIMLEY-HORN AND ASSOCIATES, INC.
 2210 East Fort Lowell Road, Suite 200
 Tucson, Arizona 85719 (520) 615-9191

NO.	DATE	REVISION	BY	CHKD.	APPR.

PLANS ARE NOT FOR CONSTRUCTION

DEPARTMENT OF TRANSPORTATION/ENGINEERING DIVISION				UT01 OF UT12
GRANT ROAD UTILITY PLAN				
STA 85+00 TO STA 108+00				
CITY OF TUCSON	DSGN. BY J.Vitela	11/09	REF.	SCALE: 1"=40'
	DRWN. BY J.Vitela	11/09		
	CHKD. BY B. Beerken	11/09	PLAN NO.	

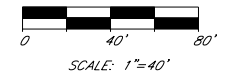
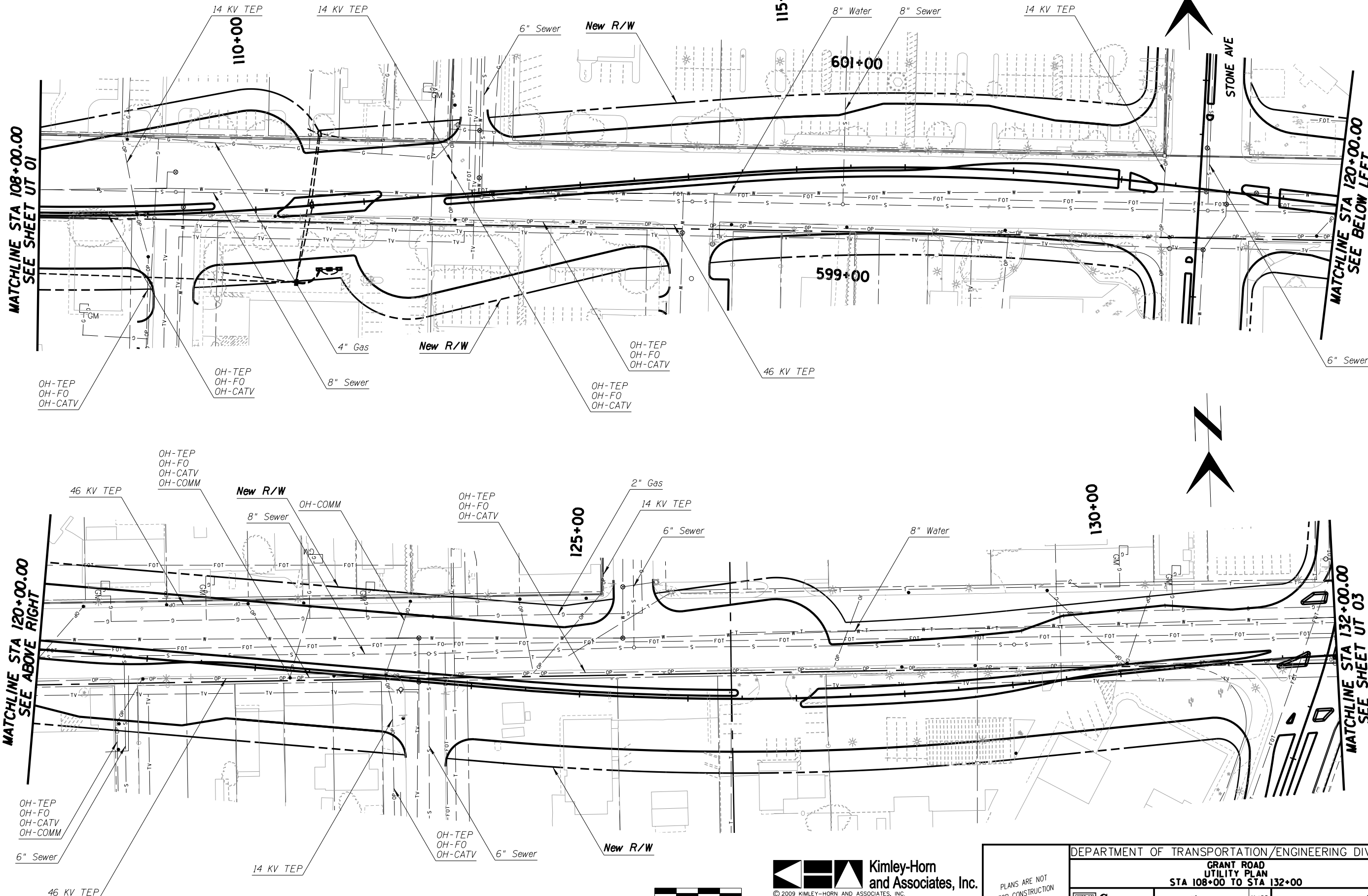
223 OF 291

MATCHLINE STA 108+00.00
SEE SHEET UT 01

MATCHLINE STA 120+00.00
SEE BELOW LEFT

MATCHLINE STA 120+00.00
SEE ABOVE RIGHT

MATCHLINE STA 132+00.00
SEE SHEET UT 03

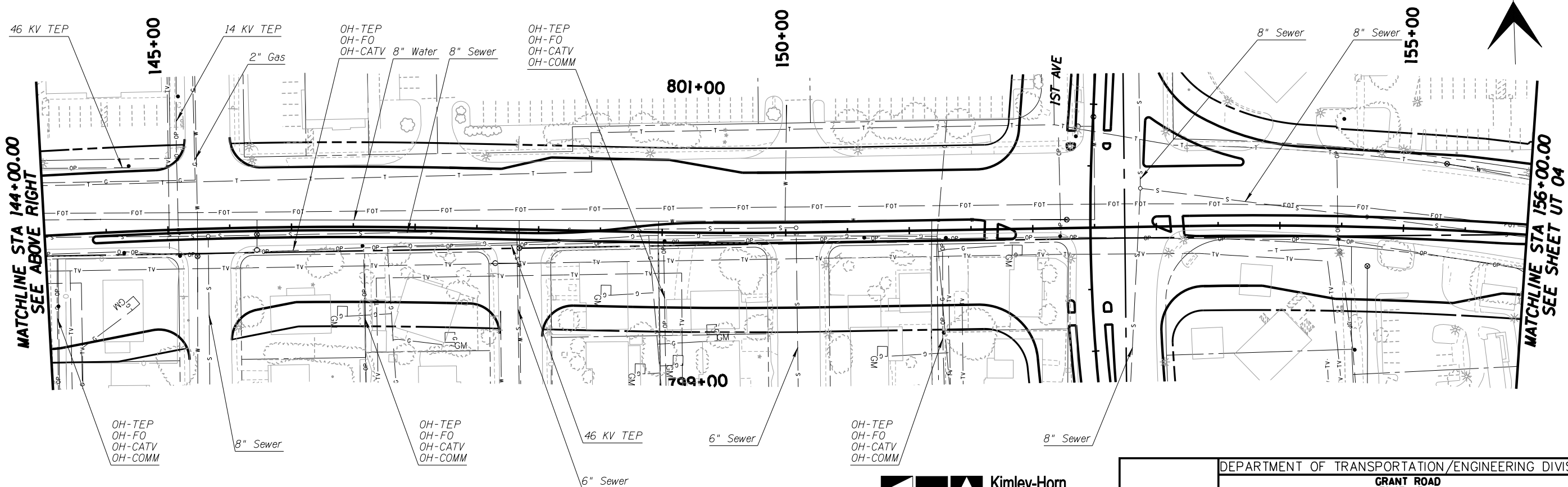
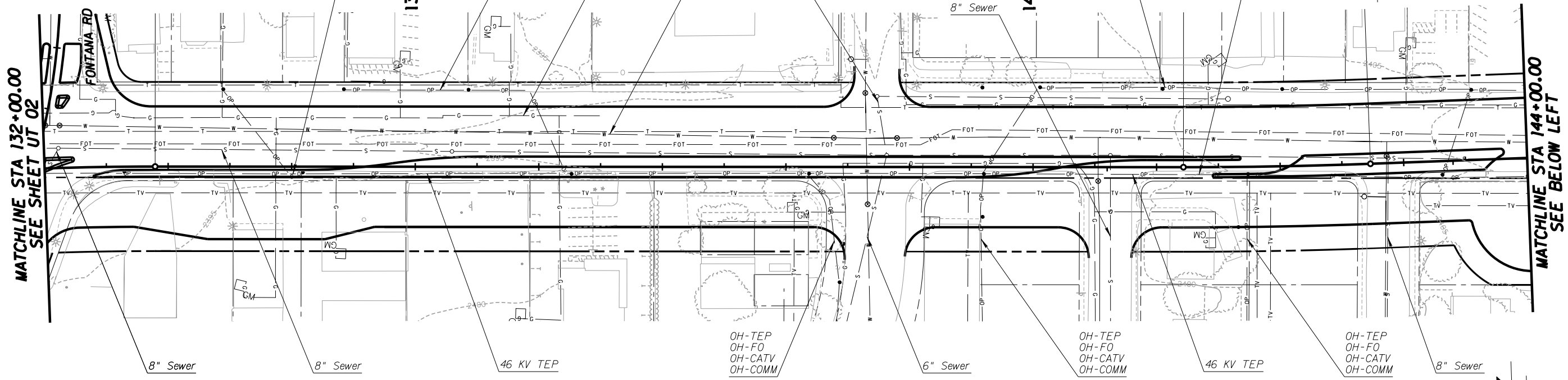


Kimley-Horn and Associates, Inc.
 © 2009 KIMLEY-HORN AND ASSOCIATES, INC.
 2210 East Fort Lowell Road, Suite 200
 Tucson, Arizona 85719 (520) 615-9191

NO.	DATE	REVISION	BY	CHKD.	APPR.

PLANS ARE NOT FOR CONSTRUCTION

DEPARTMENT OF TRANSPORTATION/ENGINEERING DIVISION				UT02
GRANT ROAD UTILITY PLAN STA 108+00 TO STA 132+00				OF UT12
	DSGN. BY J.Vitela	11/09	REF.	SCALE: 1"=40'
	DRWN. BY J.Vitela	11/09		224
	CHKD. BY B. Beenken	11/09	PLAN NO.	OF 291

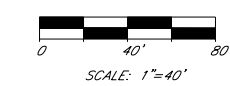


MATCHLINE STA 132+00.00
SEE SHEET UT 02

MATCHLINE STA 144+00.00
SEE BELOW LEFT

MATCHLINE STA 144+00.00
SEE ABOVE RIGHT

MATCHLINE STA 156+00.00
SEE SHEET UT 04

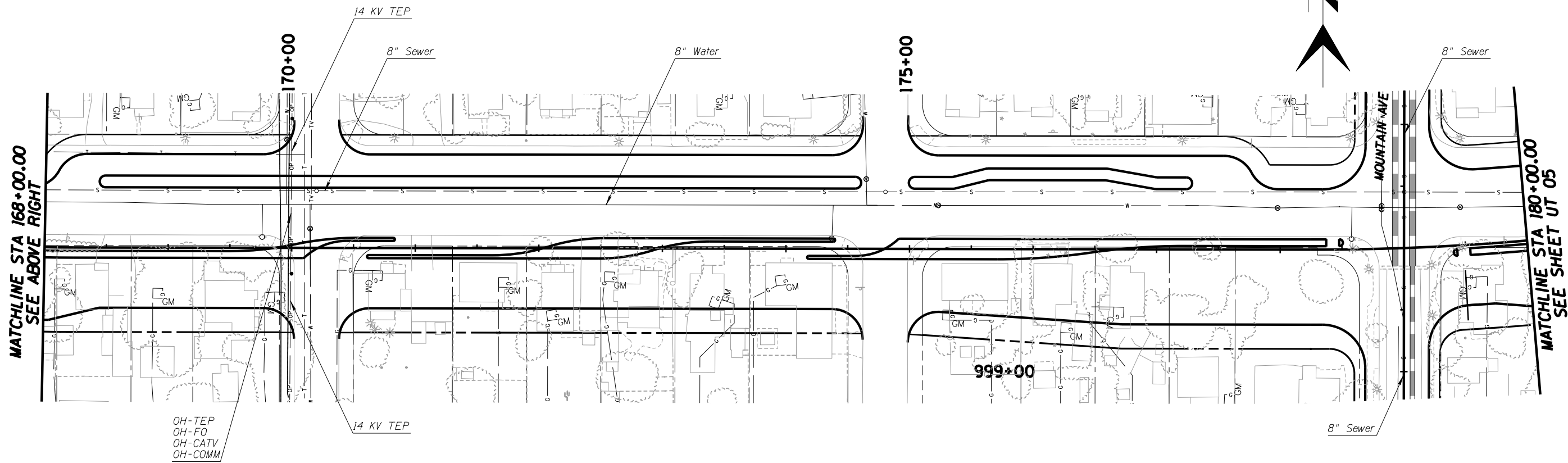
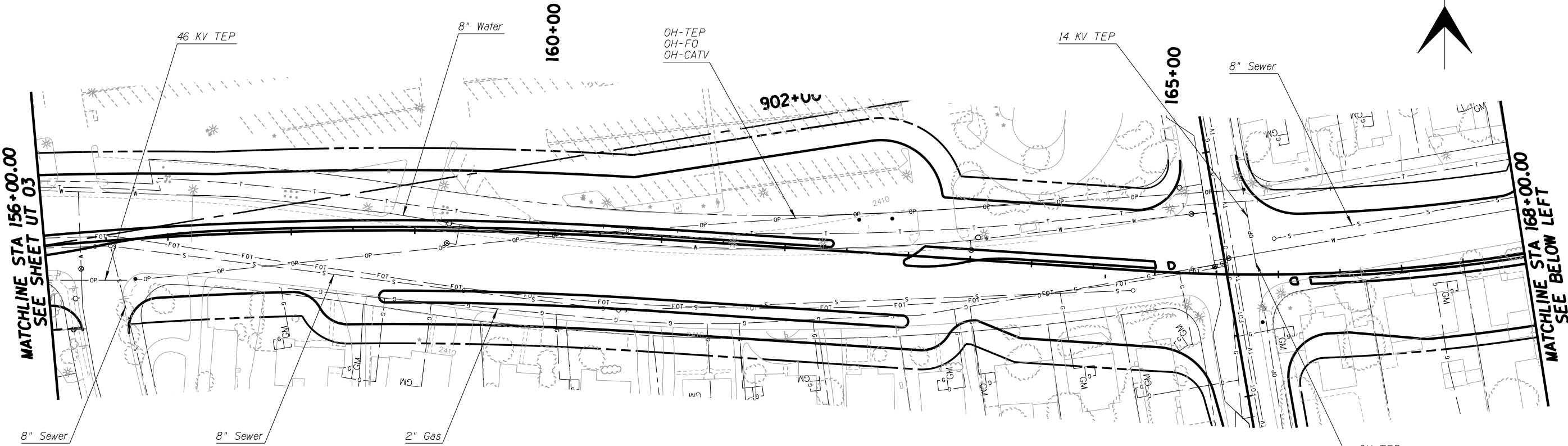


**Kimley-Horn
and Associates, Inc.**
© 2009 KIMLEY-HORN AND ASSOCIATES, INC.
2210 East Fort Lowell Road, Suite 200
Tucson, Arizona 85719 (520) 615-9191

NO.	DATE	REVISION	BY	CHKD.	APPR.

PLANS ARE NOT
FOR CONSTRUCTION

DEPARTMENT OF TRANSPORTATION/ENGINEERING DIVISION				UT03 OF UT12
GRANT ROAD UTILITY PLAN STA 132+00 TO STA 156+00				
	DSGN. BY J.Vitela	11/09	REF.	SCALE: 1"=40'
	DRWN. BY J.Vitela	11/09		
	CHKD. BY B. Beerken	11/09	PLAN NO.	
				225 OF 291

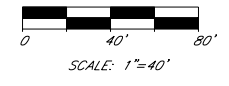
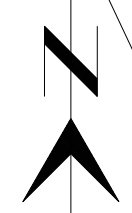
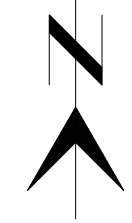


MATCHLINE STA 156+00.00
SEE SHEET UT 03

MATCHLINE STA 168+00.00
SEE BELOW LEFT

MATCHLINE STA 168+00.00
SEE ABOVE RIGHT

MATCHLINE STA 180+00.00
SEE SHEET UT 05



Kimley-Horn and Associates, Inc.
© 2009 KIMLEY-HORN AND ASSOCIATES, INC.
2210 East Fort Lowell Road, Suite 200
Tucson, Arizona 85719 (520) 615-9191

NO.	DATE	REVISION	BY	CHKD.	APPR.

PLANS ARE NOT FOR CONSTRUCTION

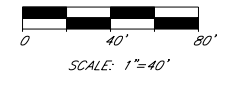
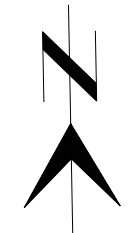
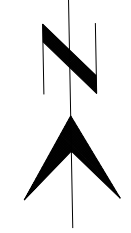
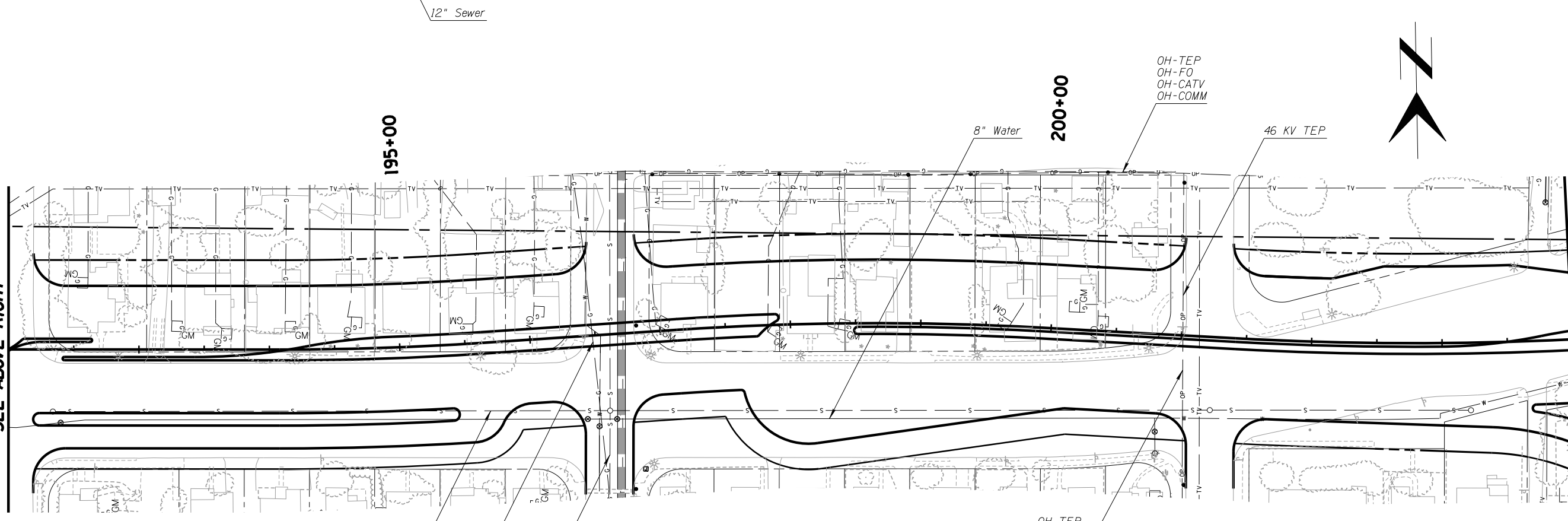
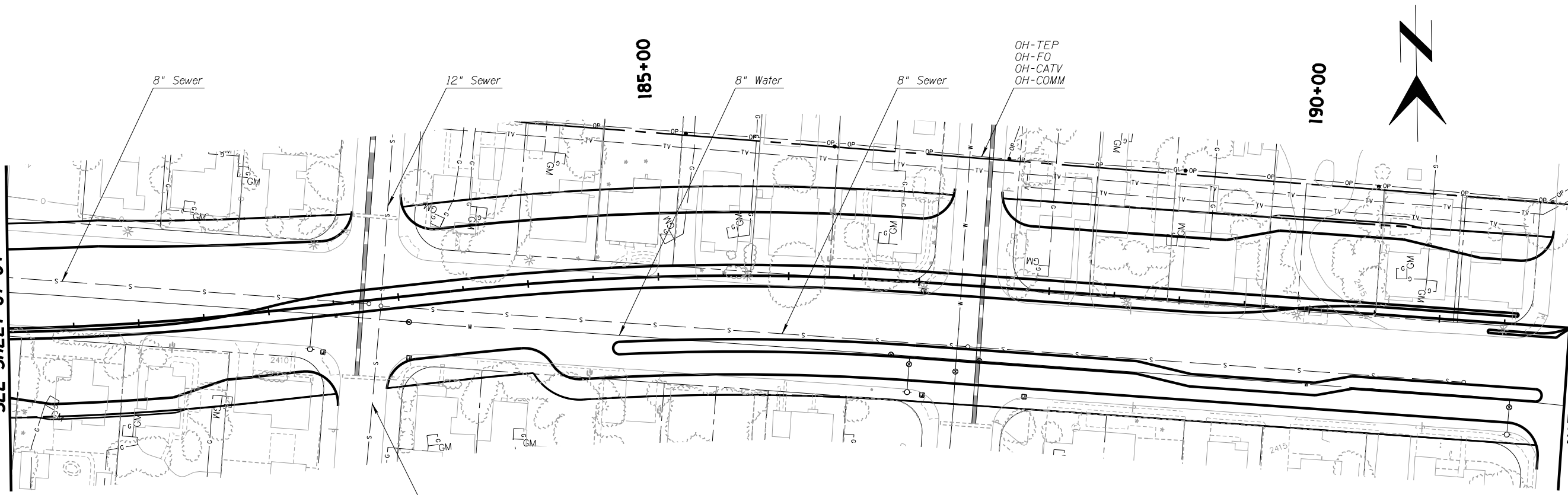
DEPARTMENT OF TRANSPORTATION/ENGINEERING DIVISION				UT04
GRANT ROAD UTILITY PLAN STA 156+00 TO STA 180+00				OF UT12
	DSGN. BY J.Vitela	11/09	REF.	SCALE: 1"=40'
	DRWN. BY J.Vitela	11/09		226
	CHKD. BY B. Beerken	11/09	PLAN NO.	OF 291

MATCHLINE STA 180+00.00
SEE SHEET UT 04

MATCHLINE STA 192+00.00
SEE BELOW LEFT

MATCHLINE STA 192+00.00
SEE ABOVE RIGHT

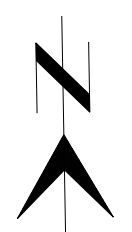
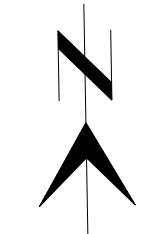
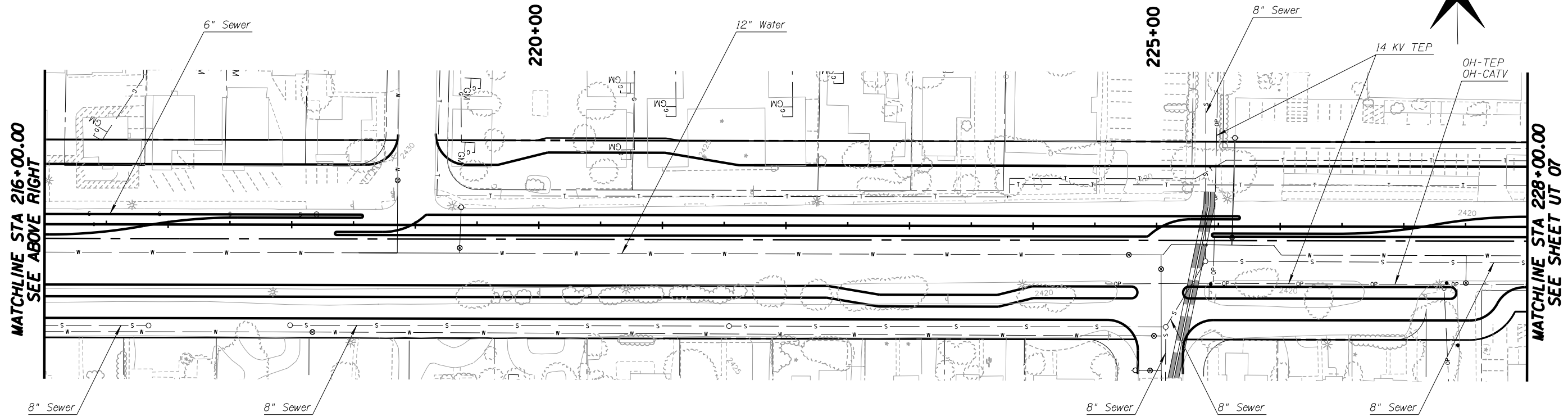
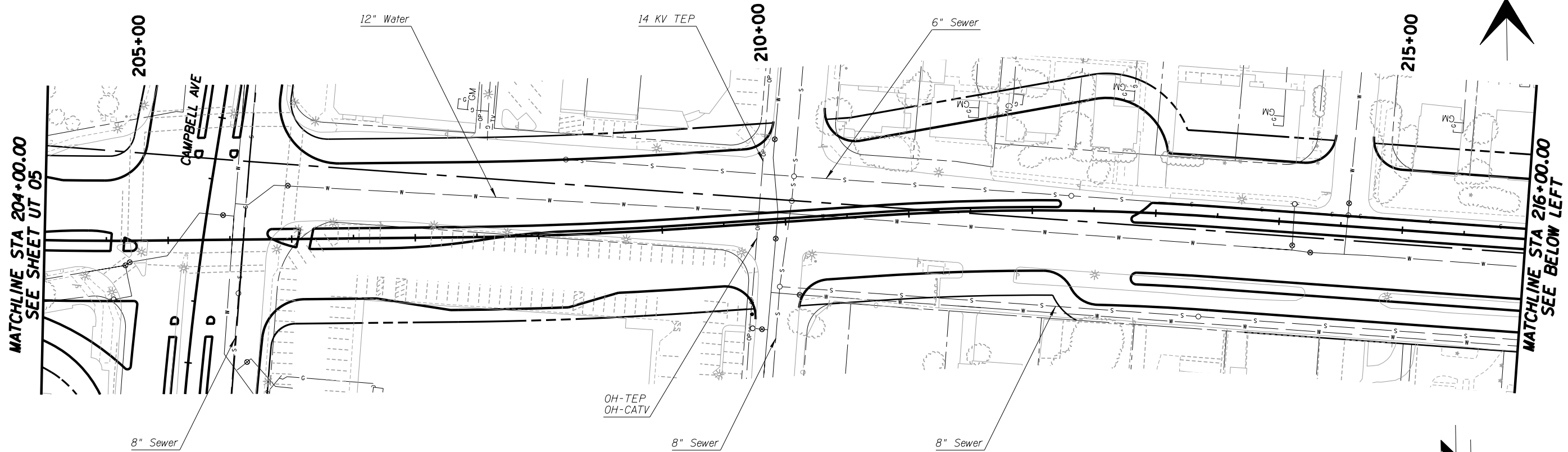
MATCHLINE STA 204+00.00
SEE SHEET UT 06



NO.	DATE	REVISION	BY	CHKD.	APPR.

PLANS ARE NOT FOR CONSTRUCTION

DEPARTMENT OF TRANSPORTATION/ENGINEERING DIVISION				UT05
GRANT ROAD UTILITY PLAN STA 180+00 TO STA 204+00				OF UT12
	DSGN. BY J.Vitela	11/09	REF. _____	SCALE: 1"=40'
	DRWN. BY J.Vitela	11/09	_____	227
	CHKD. BY B. Beerken	11/09	PLAN NO. _____	OF 291

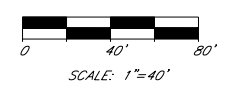


MATCHLINE STA 204+00.00
SEE SHEET UT 05

MATCHLINE STA 216+00.00
SEE BELOW LEFT

MATCHLINE STA 216+00.00
SEE ABOVE RIGHT

MATCHLINE STA 228+00.00
SEE SHEET UT 07



© 2009 KIMLEY-HORN AND ASSOCIATES, INC.
2210 East Fort Lowell Road, Suite 200
Tucson, Arizona 85719 (520) 615-9191

NO.	DATE	REVISION	BY	CHKD.	APPR.

PLANS ARE NOT
FOR CONSTRUCTION

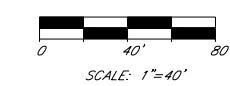
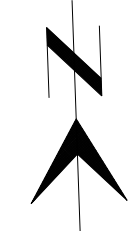
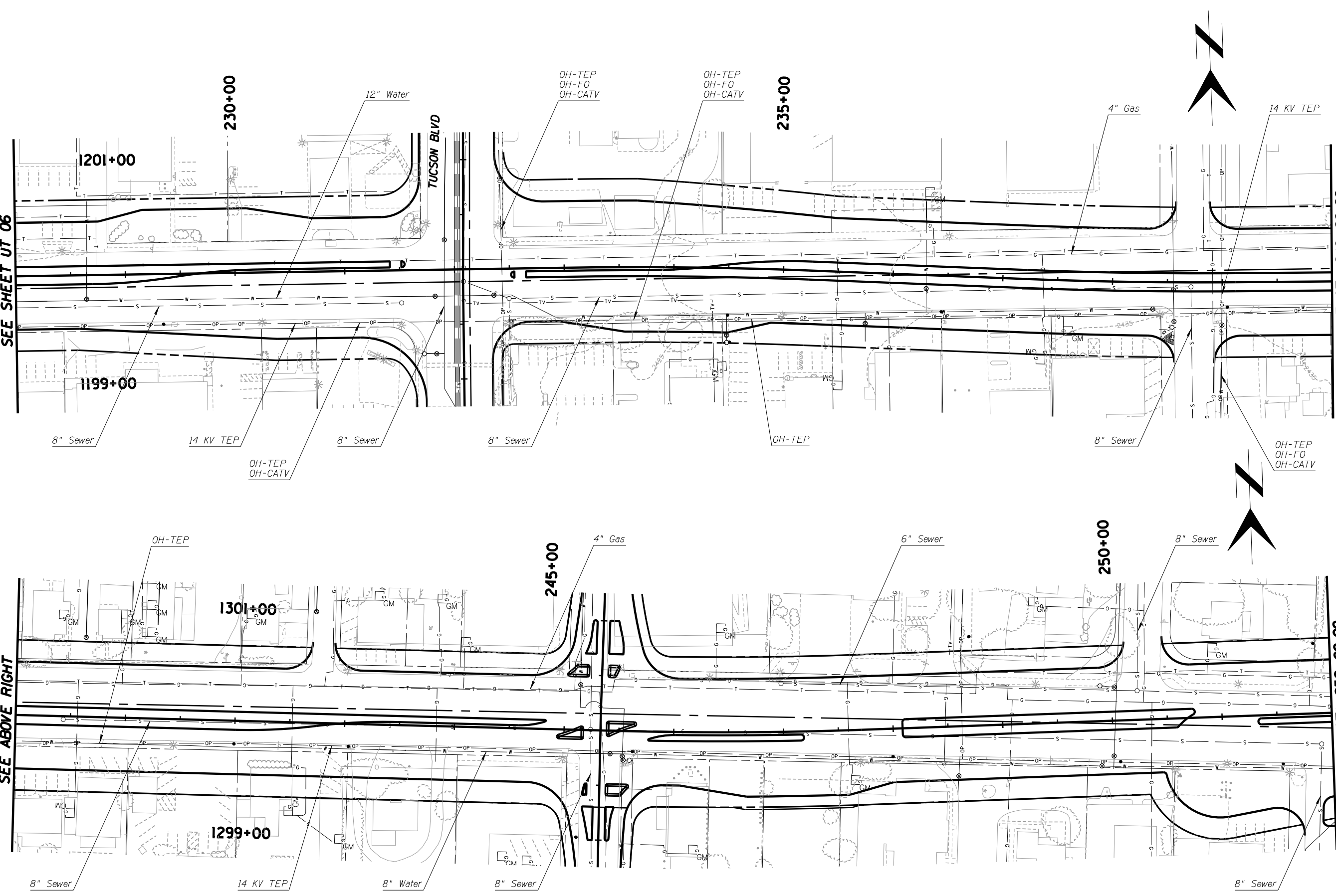
DEPARTMENT OF TRANSPORTATION/ENGINEERING DIVISION		UT06
GRANT ROAD UTILITY PLAN STA 204+00 TO STA 228+00		OF UT12
	DSGN. BY J.Vitela 11/09	REF. SCALE: 1"=40'
	DRWN. BY J.Vitela 11/09	228
	CHKD. BY B. Beerken 11/09	OF 291
PLAN NO.		

MATCHLINE STA 228+00.00
SEE SHEET UT 06

MATCHLINE STA 240+00.00
SEE BELOW LEFT

MATCHLINE STA 240+00.00
SEE ABOVE RIGHT

MATCHLINE STA 252+00.00
SEE SHEET UT 08

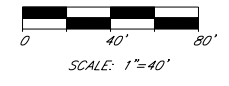
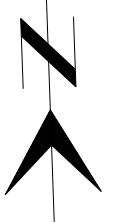
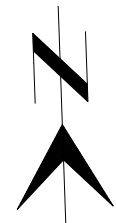
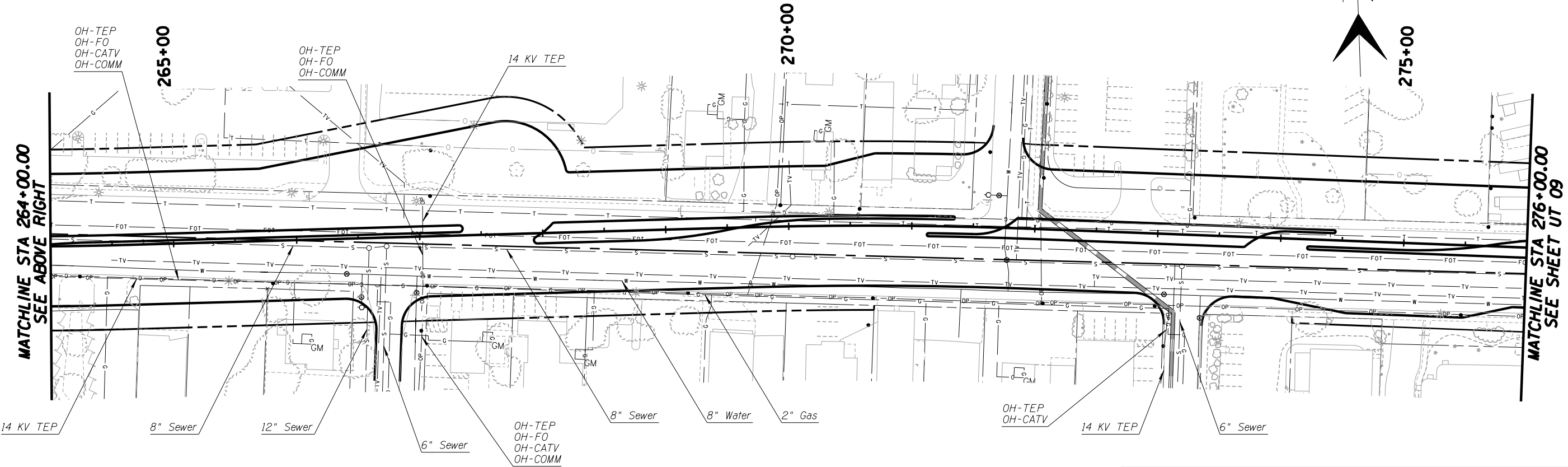
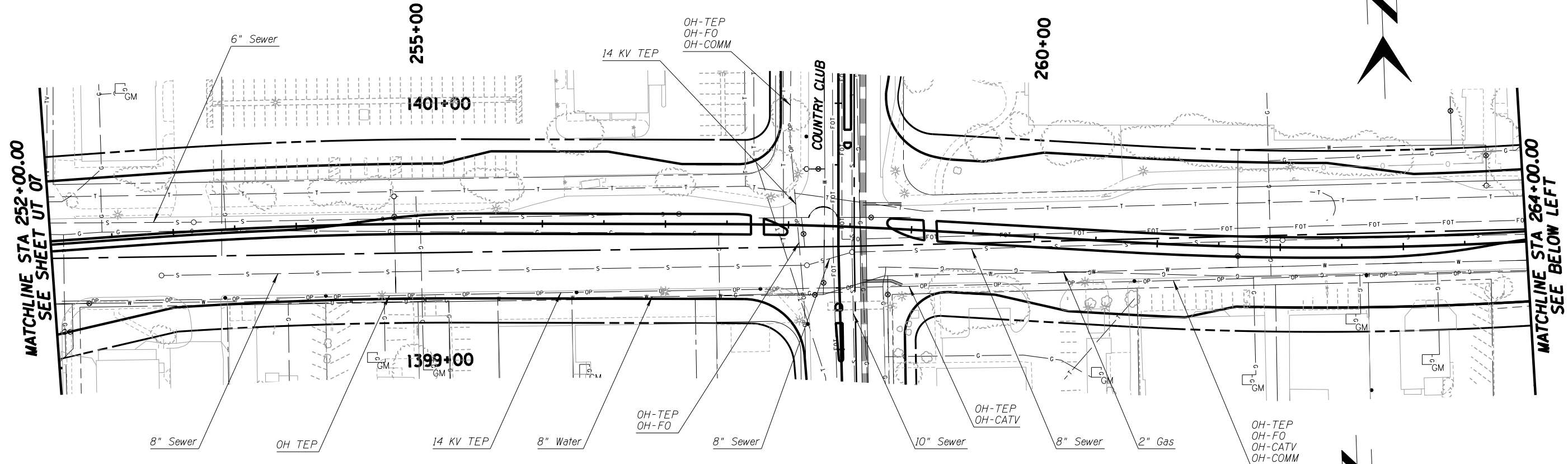


© 2009 KIMLEY-HORN AND ASSOCIATES, INC.
2210 East Fort Lowell Road, Suite 200
Tucson, Arizona 85719 (520) 615-9191

NO.	DATE	REVISION	BY	CHKD.	APPR.

PLANS ARE NOT
FOR CONSTRUCTION

DEPARTMENT OF TRANSPORTATION/ENGINEERING DIVISION				UT07
GRANT ROAD UTILITY PLAN STA 228+00 TO STA 252+00				OF UT12
	DSGN. BY J.Vitela	11/09	REF.	SCALE: 1"=40'
	DRWN. BY J.Vitela	11/09		
	CHKD. BY B. Beerken	11/09	PLAN NO.	
				229 OF 291

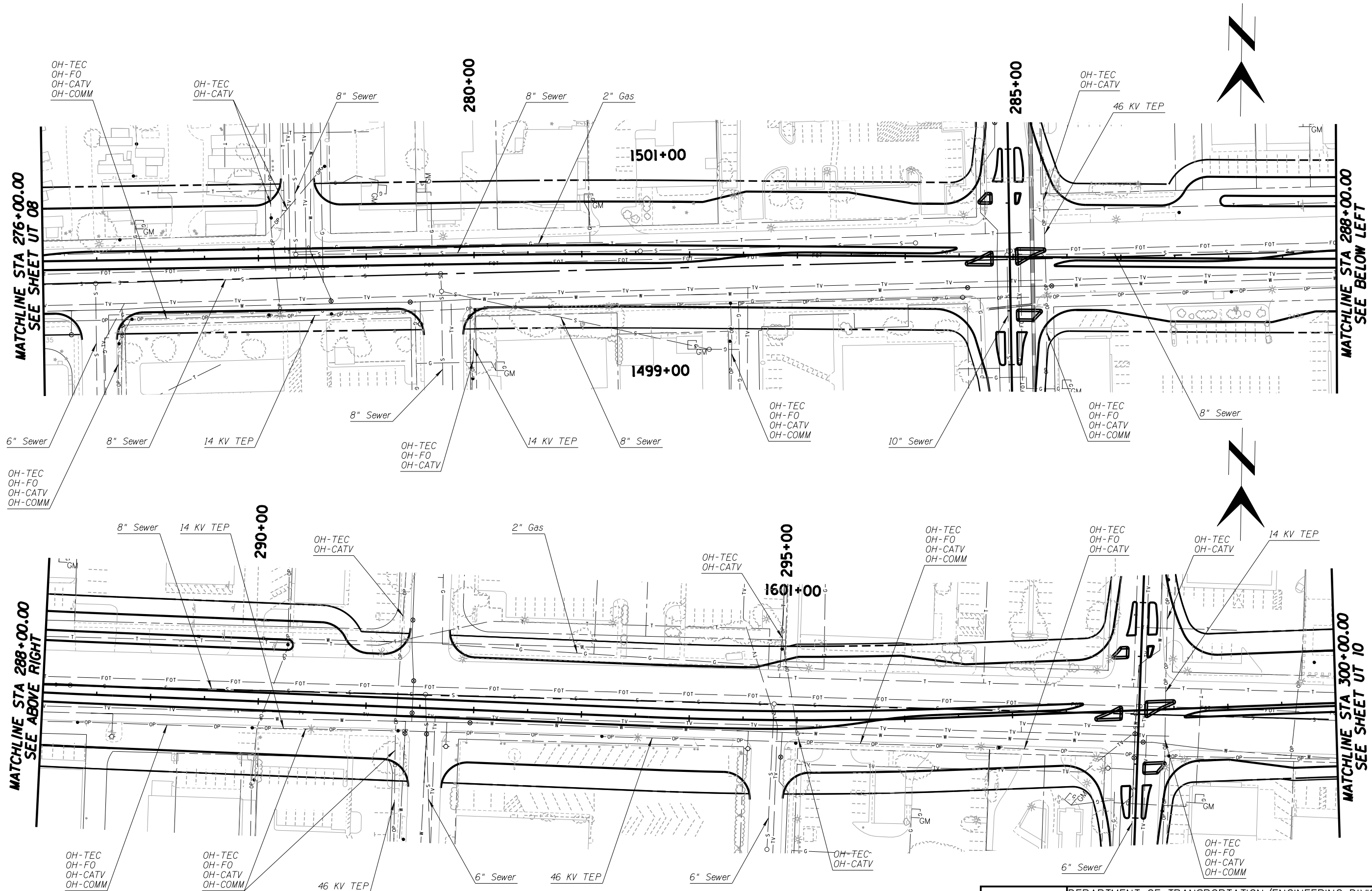


Kimley-Horn and Associates, Inc.
 © 2009 KIMLEY-HORN AND ASSOCIATES, INC.
 2210 East Fort Lowell Road, Suite 200
 Tucson, Arizona 85719 (520) 615-9191

NO.	DATE	REVISION	BY	CHKD.	APPR.

PLANS ARE NOT FOR CONSTRUCTION

DEPARTMENT OF TRANSPORTATION/ENGINEERING DIVISION				UT08
GRANT ROAD UTILITY PLAN STA 252+00 TO STA 276+00				OF UT12
	DSGN. BY J.Vitela	11/09	REF.	SCALE: 1"=40'
	DRWN. BY J.Vitela	11/09		
	CHKD. BY B. Beerken	11/09	PLAN NO.	
				230 OF 291

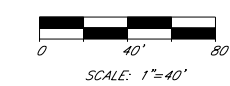


MATCHLINE STA 276+00.00
SEE SHEET UT 08

MATCHLINE STA 288+00.00
SEE BELOW LEFT

MATCHLINE STA 288+00.00
SEE ABOVE RIGHT

MATCHLINE STA 300+00.00
SEE SHEET UT 10

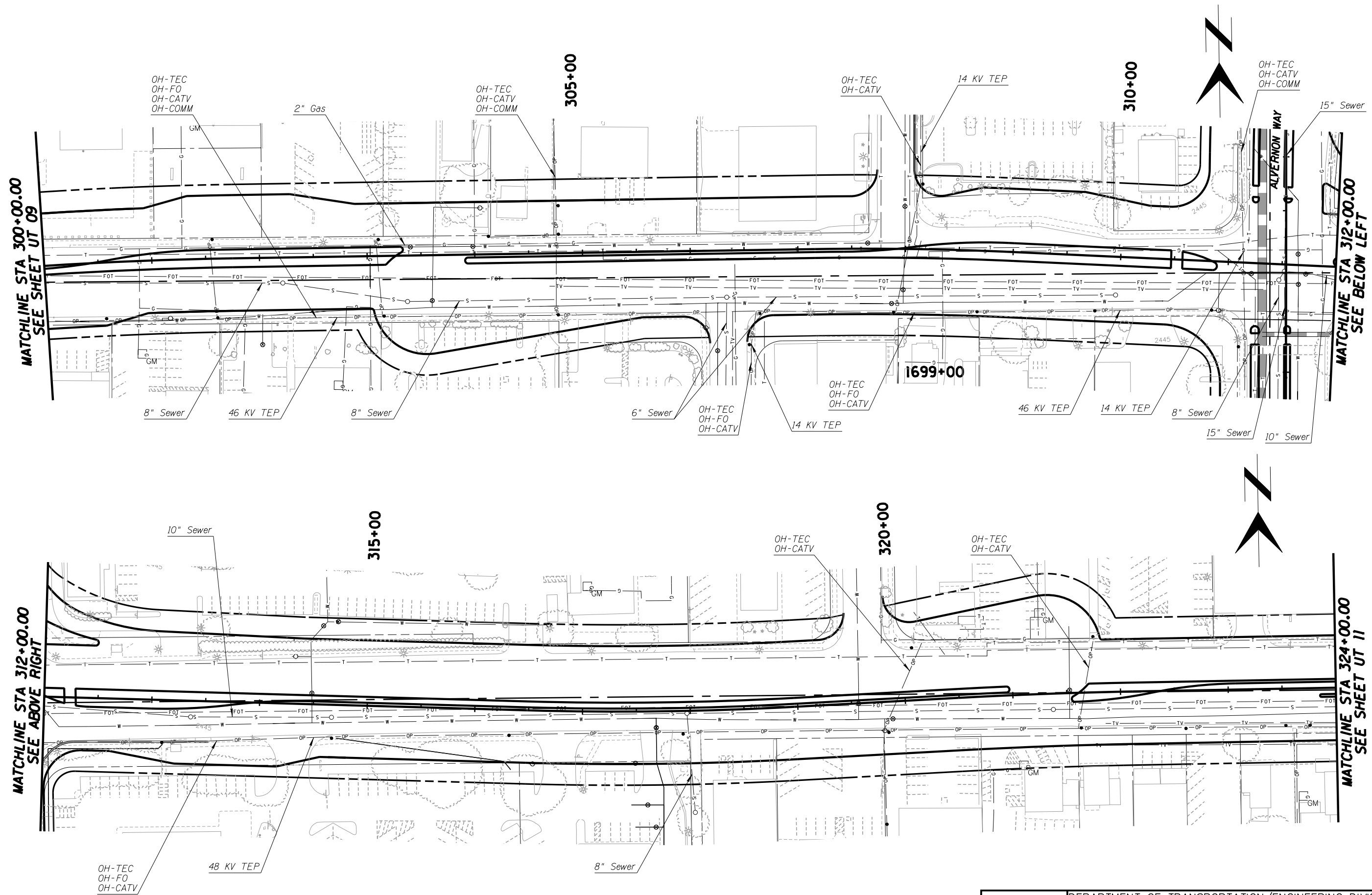


Kimley-Horn and Associates, Inc.
 © 2009 KIMLEY-HORN AND ASSOCIATES, INC.
 2210 East Fort Lowell Road, Suite 200
 Tucson, Arizona 85719 (520) 615-9191

PLANS ARE NOT FOR CONSTRUCTION

DEPARTMENT OF TRANSPORTATION/ENGINEERING DIVISION				UT09
GRANT ROAD UTILITY PLAN				OF
STA 276+00 TO STA 300+00				UT12
	DSGN. BY J.Vitela	11/09	REF.	SCALE: 1"=40'
	DRWN. BY J.Vitela	11/09		
	CHKD. BY B. Beerken	11/09	PLAN NO.	
				231
				OF
				291

NO.	DATE	REVISION	BY	CHKD.	APPR.

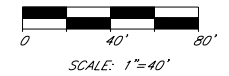


MATCHLINE STA 300+00.00
SEE SHEET UT 09

MATCHLINE STA 312+00.00
SEE BELOW LEFT

MATCHLINE STA 312+00.00
SEE ABOVE RIGHT

MATCHLINE STA 324+00.00
SEE SHEET UT 11

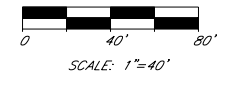
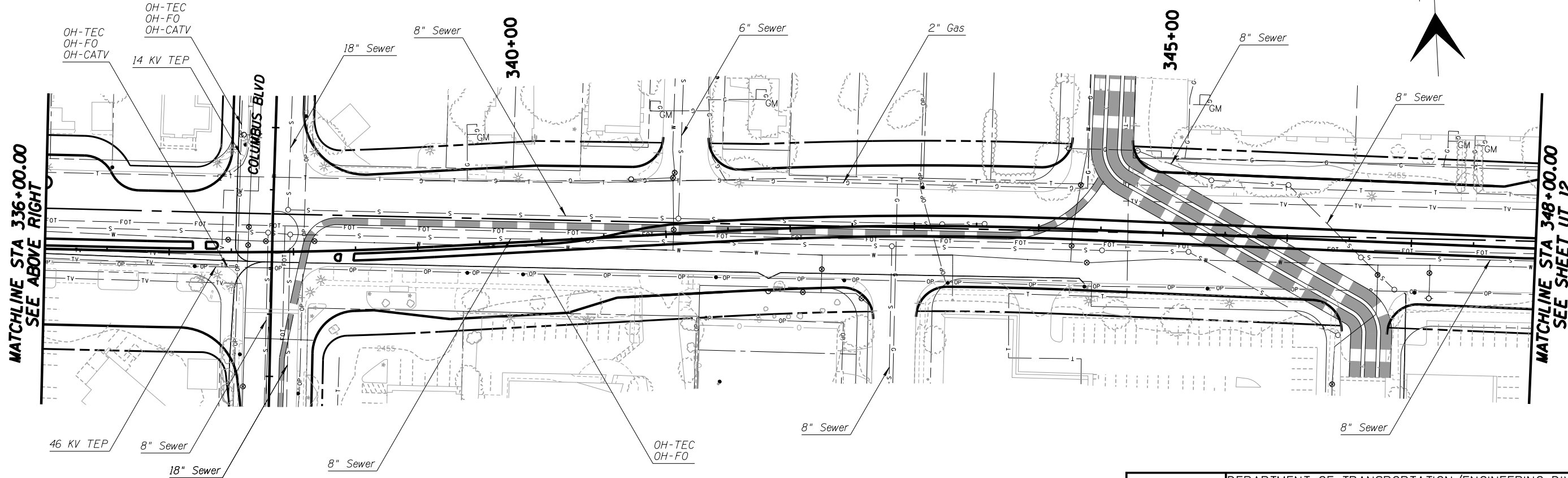
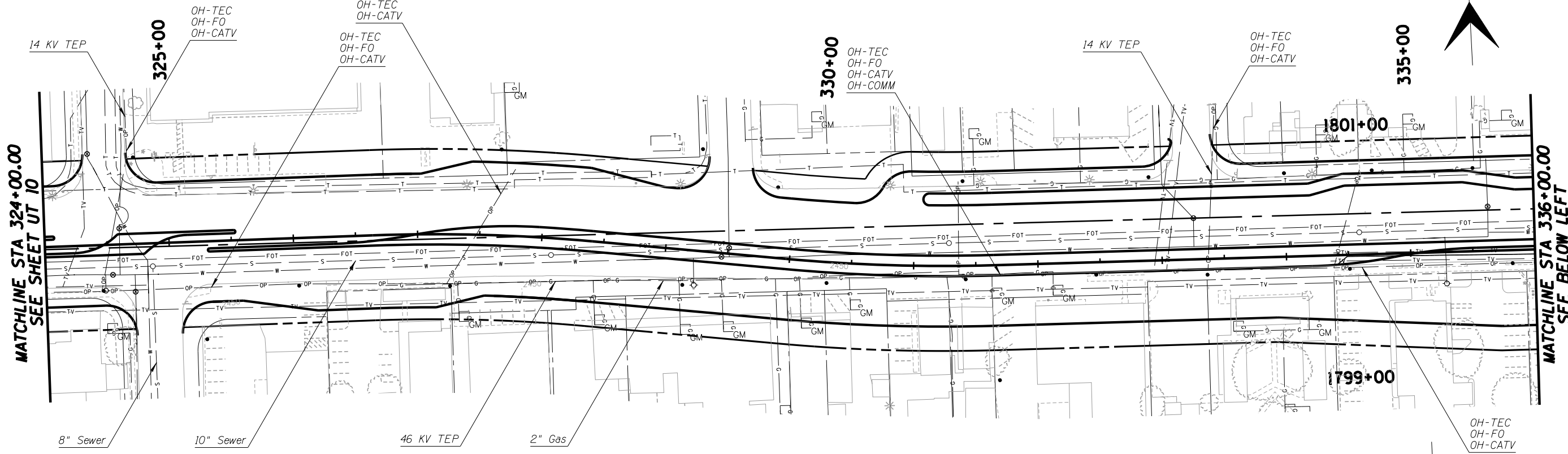


Kimley-Horn and Associates, Inc.
© 2009 KIMLEY-HORN AND ASSOCIATES, INC.
2210 East Fort Lowell Road, Suite 200
Tucson, Arizona 85719 (520) 615-9191

NO.	DATE	REVISION	BY	CHKD.	APPR.

PLANS ARE NOT FOR CONSTRUCTION

DEPARTMENT OF TRANSPORTATION/ENGINEERING DIVISION		UT10
GRANT ROAD UTILITY PLAN STA 300+00 TO STA 324+00		OF UT12
	DSGN. BY J.Vitela 11/09	SCALE: 1"=40' 232 OF 291
	DRWN. BY J.Vitela 11/09	
	CHKD. BY B. Beenken 11/09	
PLAN NO.		

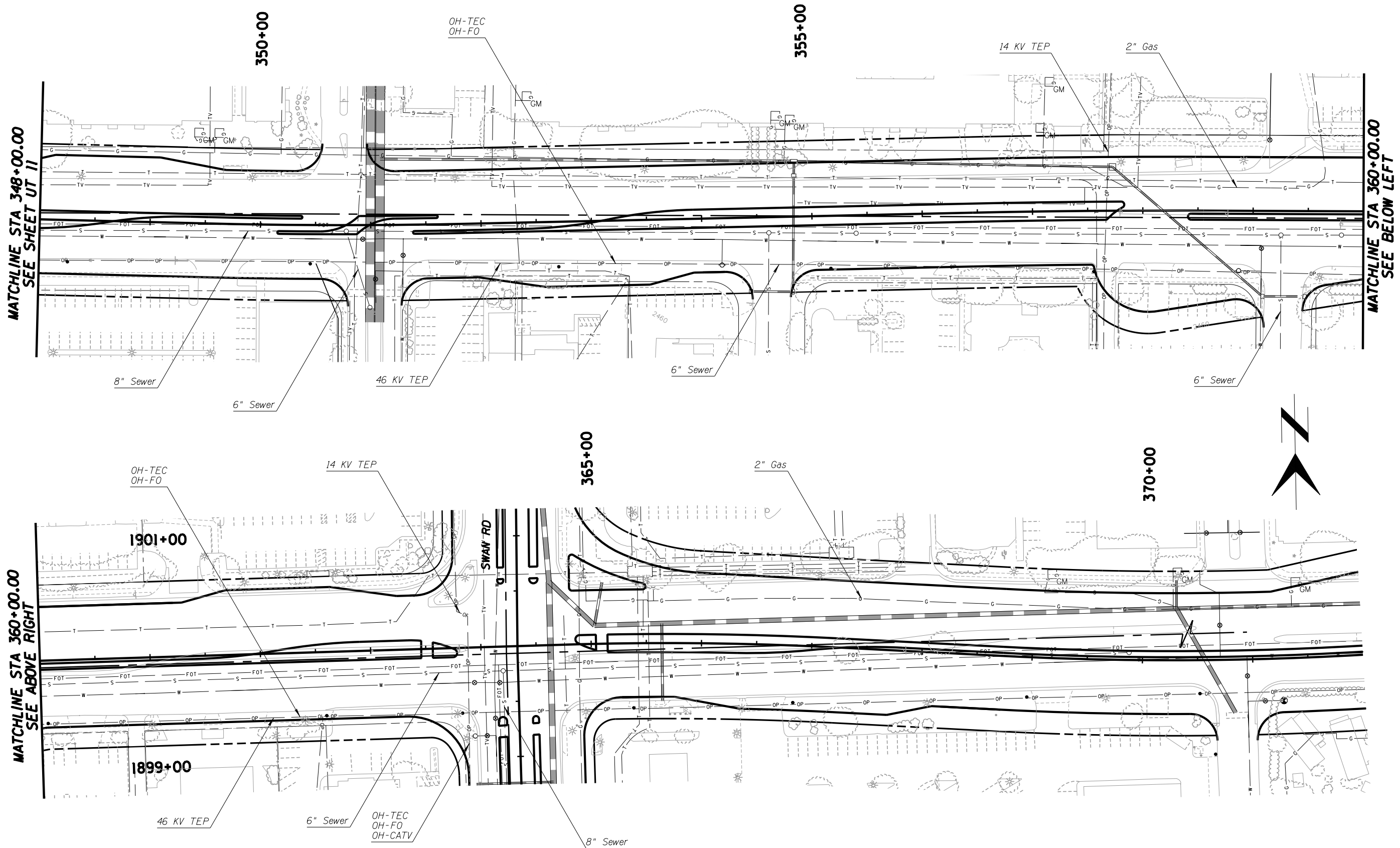


Kimley-Horn and Associates, Inc.
 © 2009 KIMLEY-HORN AND ASSOCIATES, INC.
 2210 East Fort Lowell Road, Suite 200
 Tucson, Arizona 85719 (520) 615-9191

NO.	DATE	REVISION	BY	CHKD.	APPR.

PLANS ARE NOT FOR CONSTRUCTION

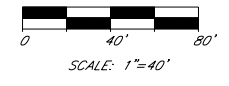
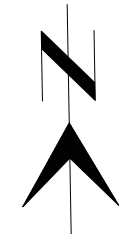
DEPARTMENT OF TRANSPORTATION/ENGINEERING DIVISION		UT11
GRANT ROAD UTILITY PLAN STA 324+00 TO STA 348+00		OF UT12
	DSGN. BY J.Vitela 11/09	REF. _____ SCALE: 1"=40' 233 OF 291
	DRWN. BY J.Vitela 11/09	
	CHKD. BY B. Beerken 11/09	
PLAN NO. _____		



MATCHLINE STA 348+00.00
SEE SHEET UT 11

MATCHLINE STA 360+00.00
SEE BELOW LEFT

MATCHLINE STA 360+00.00
SEE ABOVE RIGHT



Kimley-Horn and Associates, Inc.
© 2009 KIMLEY-HORN AND ASSOCIATES, INC.
2210 East Fort Lowell Road, Suite 200
Tucson, Arizona 85719 (520) 615-9191

NO.	DATE	REVISION	BY	CHKD.	APPR.

PLANS ARE NOT FOR CONSTRUCTION

DEPARTMENT OF TRANSPORTATION/ENGINEERING DIVISION				UT12
GRANT ROAD UTILITY PLAN STA 348+00 TO STA 372+00				OF UT12
CITY OF TUCSON	DSGN. BY J.Vitela	11/09	REF.	SCALE: 1"=40'
	DRWN. BY J.Vitela	11/09		234
	CHKD. BY B. Beenken	11/09	PLAN NO.	OF 291