

Access Management Tool: Cross Access & Shared Access

Cross Access: Two property owners agree to allow access between their properties and parking areas.

Shared Access: Two property owners agree to share a single driveway that accesses both properties.

Cross and Shared access reduces the number of driveways and the number of driveway conflict points along the roadway, and helps traffic move smoothly along the roadway. Conflict points are where the paths of vehicles, pedestrians, and/or bicyclists intersect. The median also reduces the number of conflict points by limiting left turns to and from driveways.

Unmanaged Access - Existing Condition

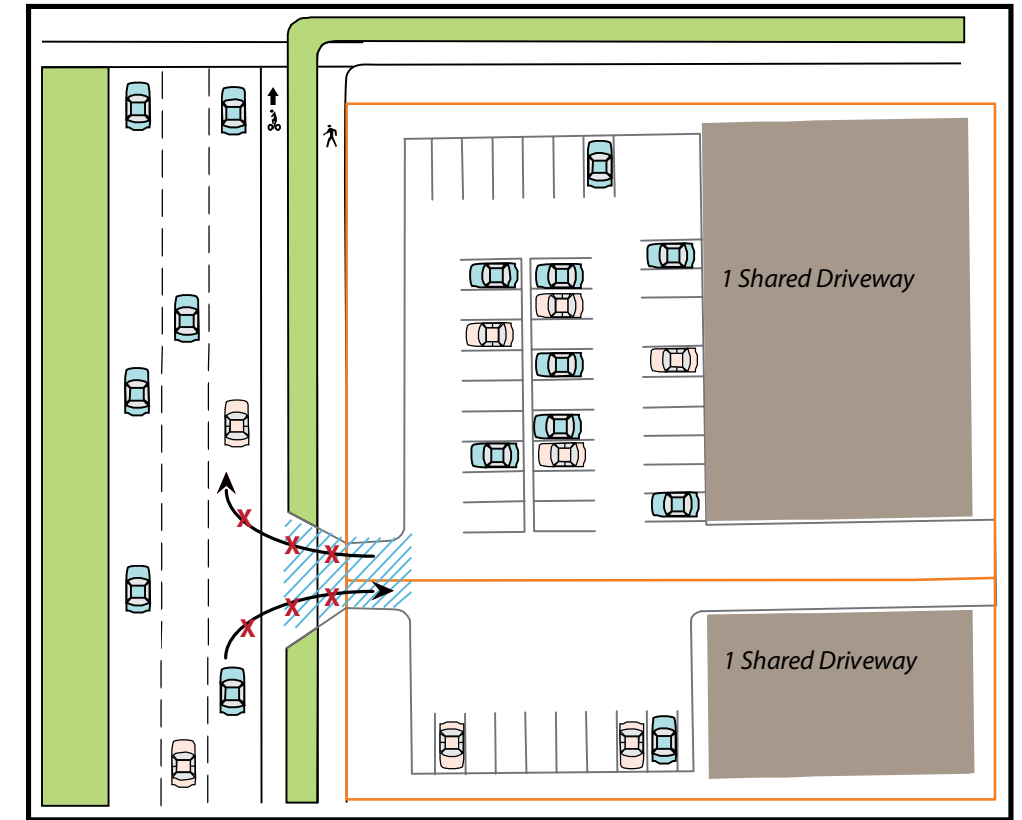
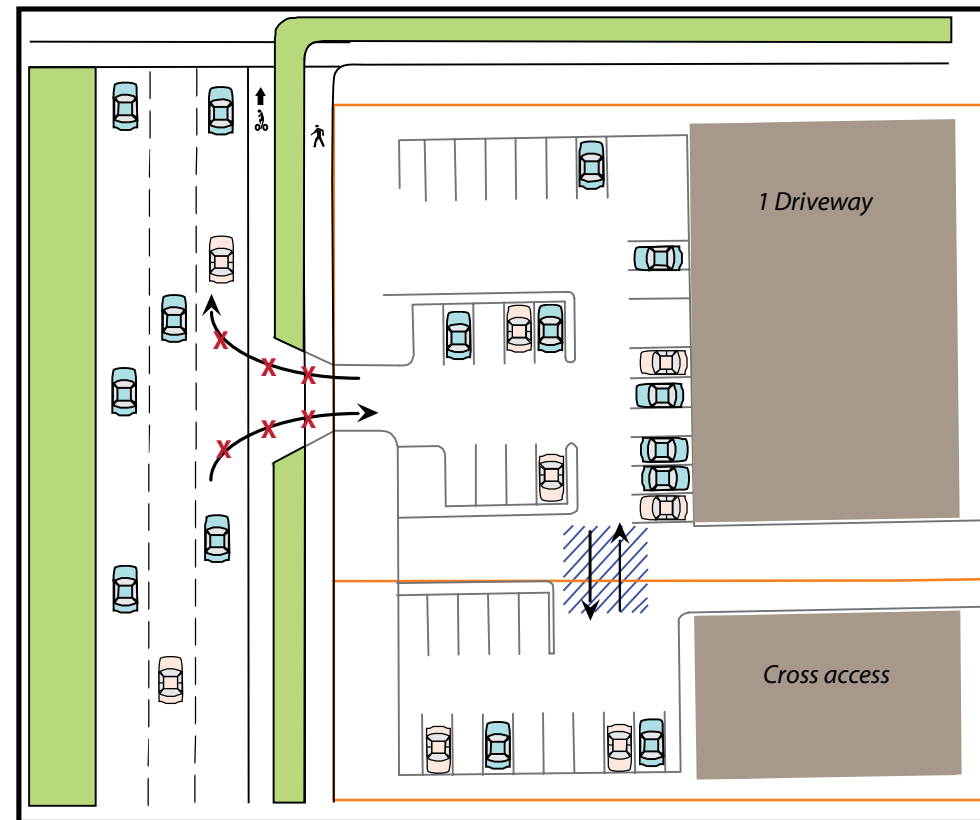
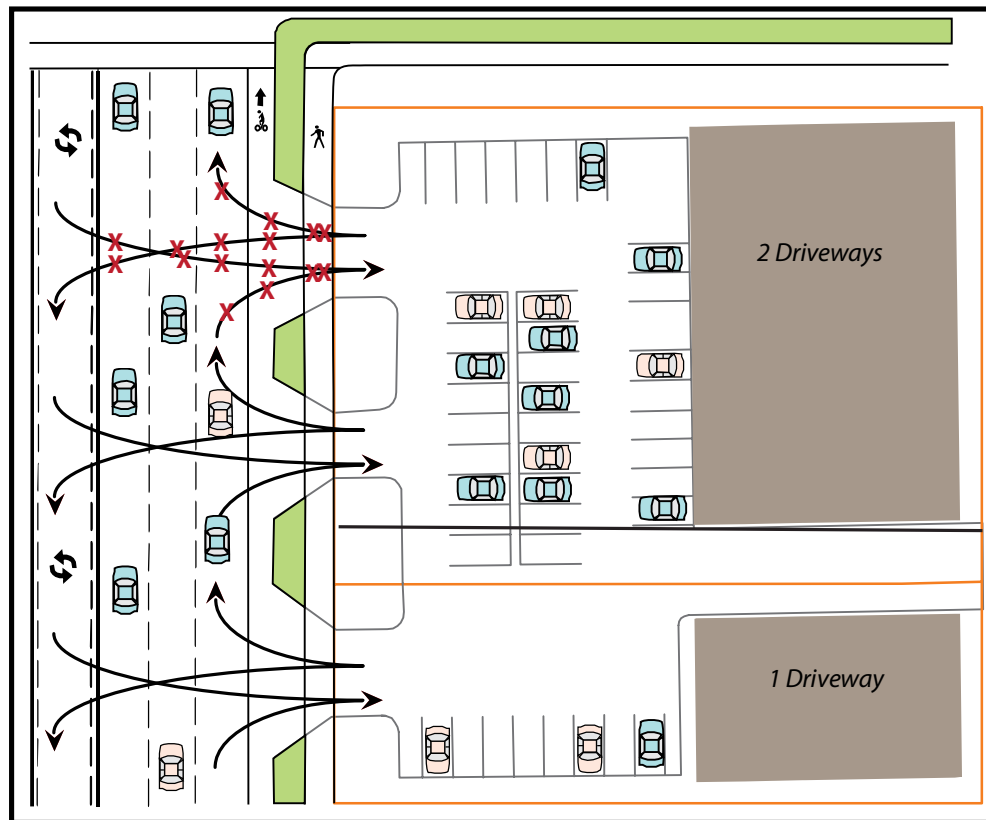
Conflict Points Between Vehicles, Bicyclists, and Pedestrians = 48 (16 at each driveway opening)

Cross Access - Possible Future Condition

Conflict Points Between Vehicles, Bicyclists, and Pedestrians = 6 (6 at each driveway opening)

Shared Access - Possible Future Condition

Conflict Points Between Vehicles, Bicyclists, and Pedestrians = 6 (6 at each driveway opening)



Legend

- X Conflict Points Between Vehicles, Pedestrians, and Bicyclists
- Vehicle Movement
- Property Line
- Cross Access
- Shared Access
- Buildings
- Potential Landscaped Area

Benefits of Cross and Shared Access

- Reduces the number of conflict points between vehicles, pedestrians and bicyclists
- Reduces congestion by maintaining the flow of traffic along the main roadway
- Provides more area for landscaping
- Makes the bicycle and pedestrian environment safer

Trade-offs of Cross and Shared Access

- Driveway access to properties from the main road is reduced

Access Management Tool: Consolidated and Relocated Driveways

Consolidated and Relocated Driveways: Closely spaced driveways along a roadway creates many conflict points between vehicles, bicyclists, and pedestrians. The illustration on the right shows how consolidating and relocating driveways reduces the number of driveways on the main roadway, thus reducing the number of conflict points at and between driveways, and helps traffic move smoothly and safer along the main roadway. Conflict points are areas where the paths of vehicles and pedestrians and/or bicyclists intersect. The landscaped median also reduces the number of conflict points by managing left turns to and from driveways.

Unmanaged Access - Existing Condition

10 Driveways

Conflict Points Between Vehicles, Bicyclists, and Pedestrians = 60 (6 at each driveway opening)



Consolidated and Relocated Driveways - Possible Future Condition

5 Driveways

Conflict Points Between Vehicles, Bicyclists, and Pedestrians = 30 (6 at each driveway opening)



Legend

- | | |
|-----------------------|---------------------------|
| Vehicle Movement | Relocated Driveway |
| Property Line | Buildings |
| Consolidated Driveway | Potential Landscaped Area |

Benefits of Improved Driveway Spacing

- Reduces the number of conflict points between vehicles, pedestrians and bicyclists
- Reduces congestion by maintaining the flow of traffic
- Provides more area for landscaping
- Makes the bicycle and pedestrian friendly environment safer

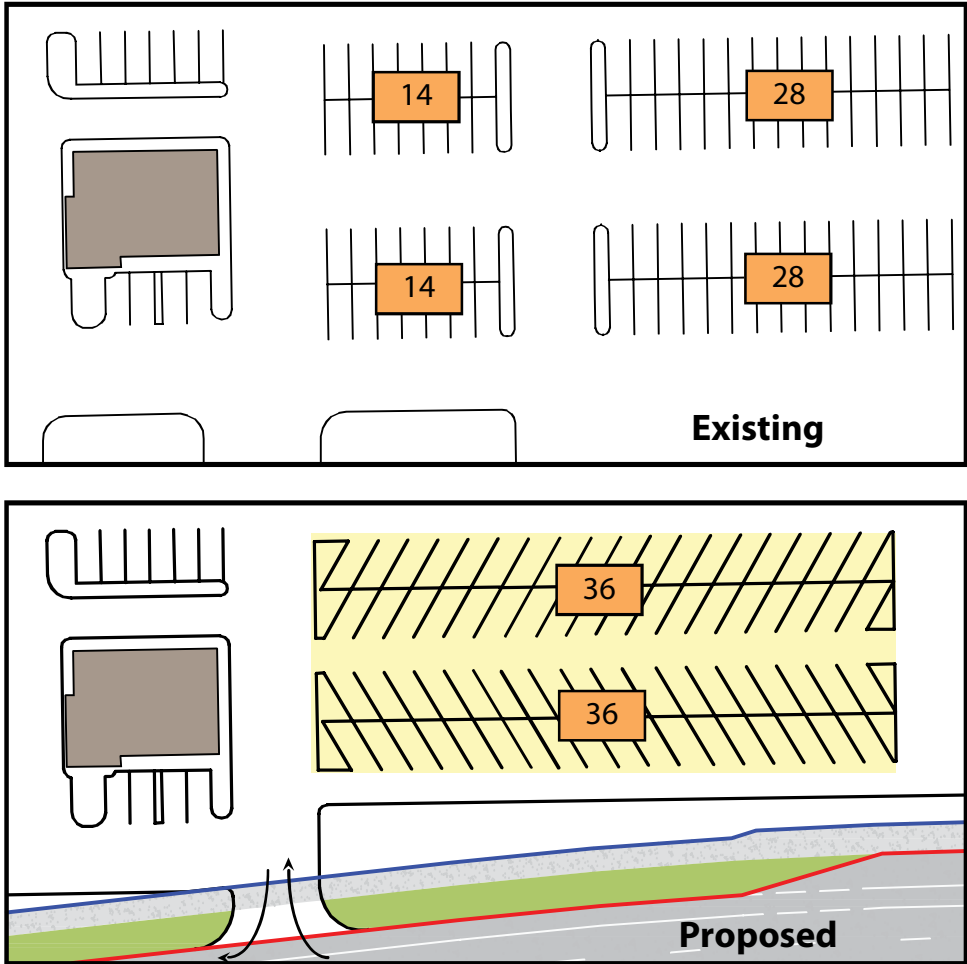
Trade-offs of Cross and Shared Access

- Driveway access to properties from the main road is reduced

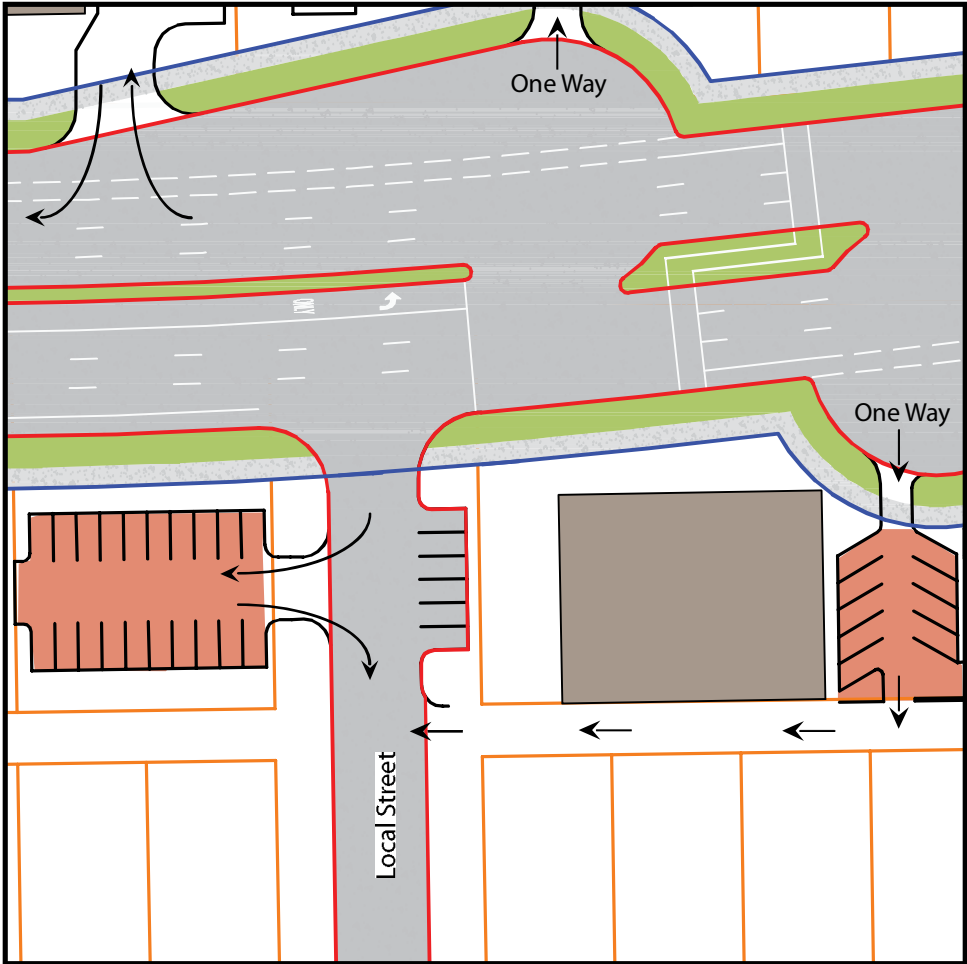
Access Management Tool: Parking Options

Parking Options: When the roadway improvements result in a significant loss of parking, alternate parking options will be considered. Three concepts are presented below to replace parking. Non-conforming use or excess loss of parking may result in an offer of full property acquisition and relocation.

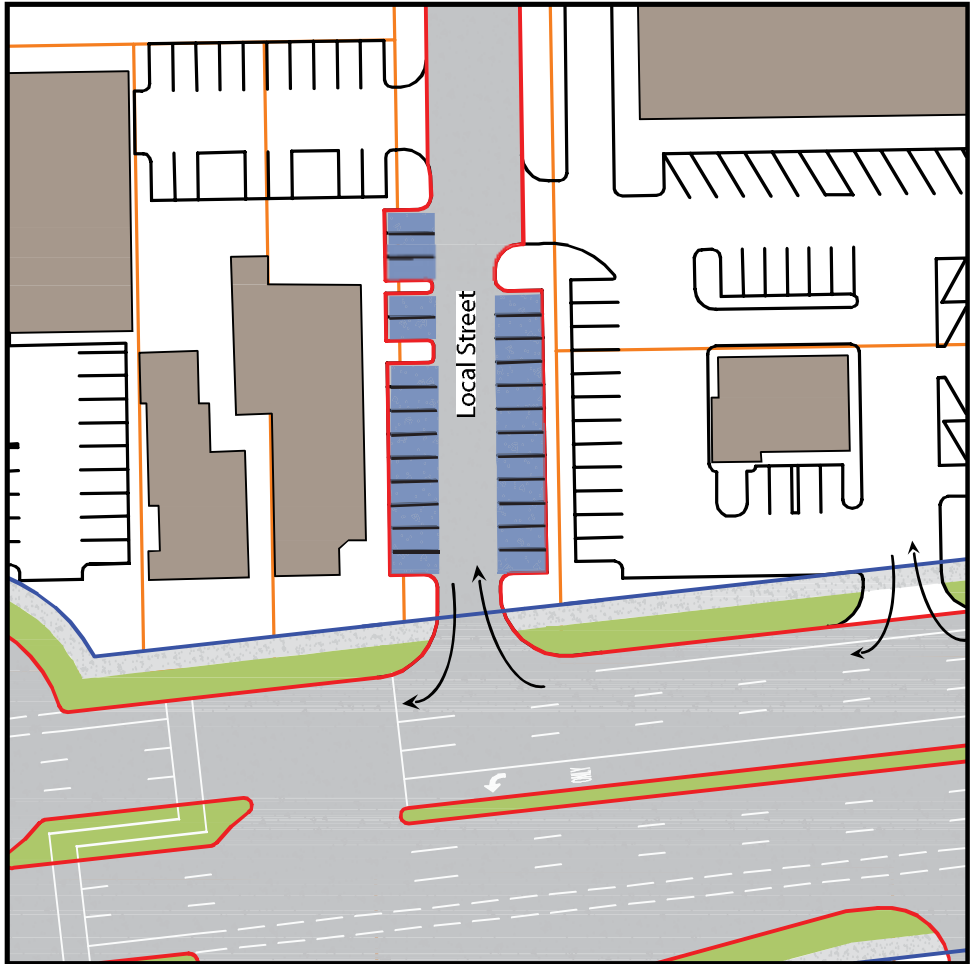
Reconfigured Parking



New Off-Street Parking - Proposed



New On-Street Parking - Proposed



Legend

— Right-of-Way	■ New On-Street Parking
— Curbline	■ Reconfigured Parking
— Property Line	■ Buildings
■ New Off-Street Parking	■ Potential Landscaped Area

Benefits of Parking Options

- Allows for existing businesses to remain
- Allows for vacated parcels to benefit remaining businesses

Trade-offs of Cross and Shared Access

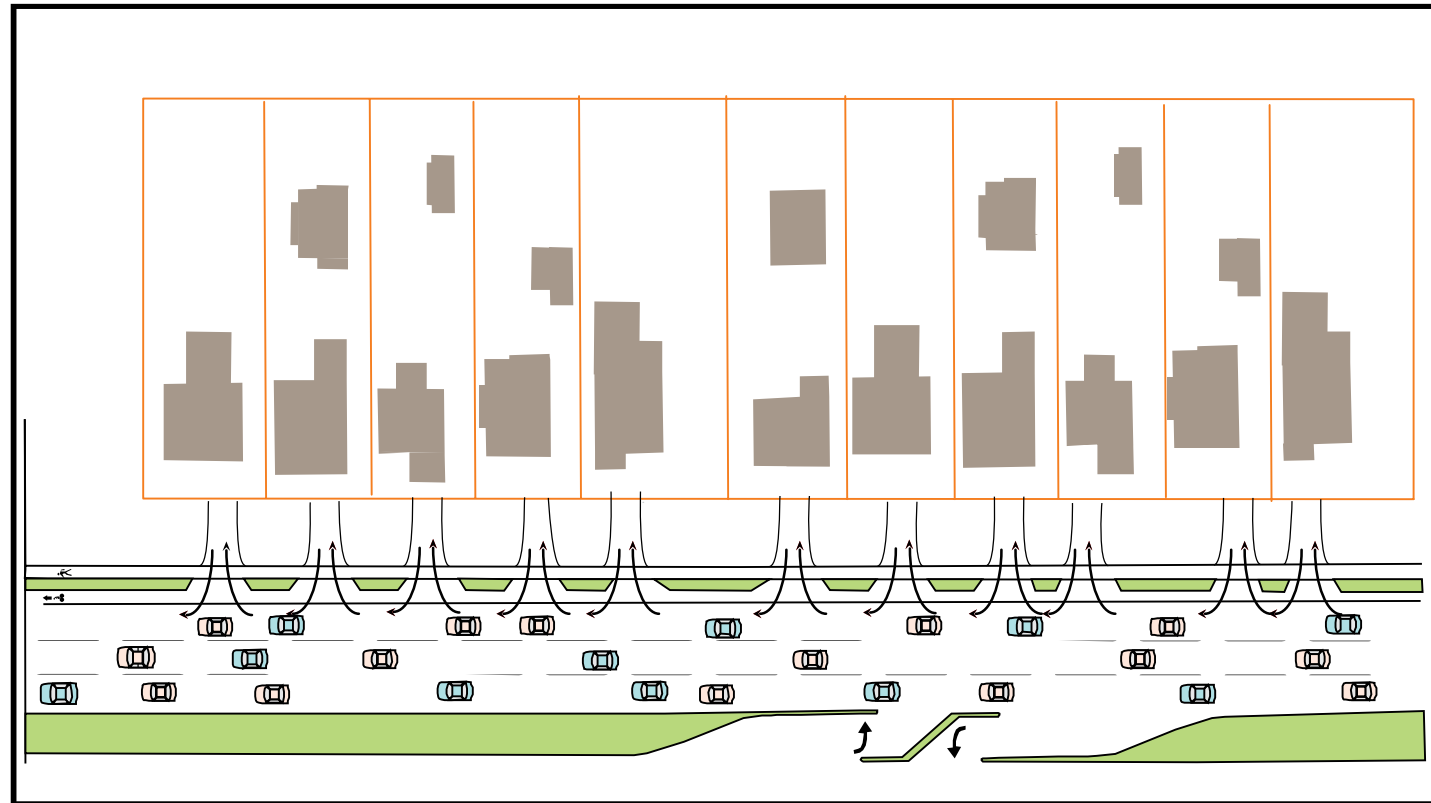
- In some circumstances, businesses may have reduced parking

Access Management Tool: Local Access Lane

Local Access Lanes: May be used in residential or commercial areas where available right-of-way allows for indirect access to the main roadway. An existing example is Grant Road and Plumer Ave. Local access lanes reduce the number of driveways on the main roadway, and the number of conflict points. The example below illustrates how driveways can be retained but the number of access points to the main roadway is reduced from 11 to 2.

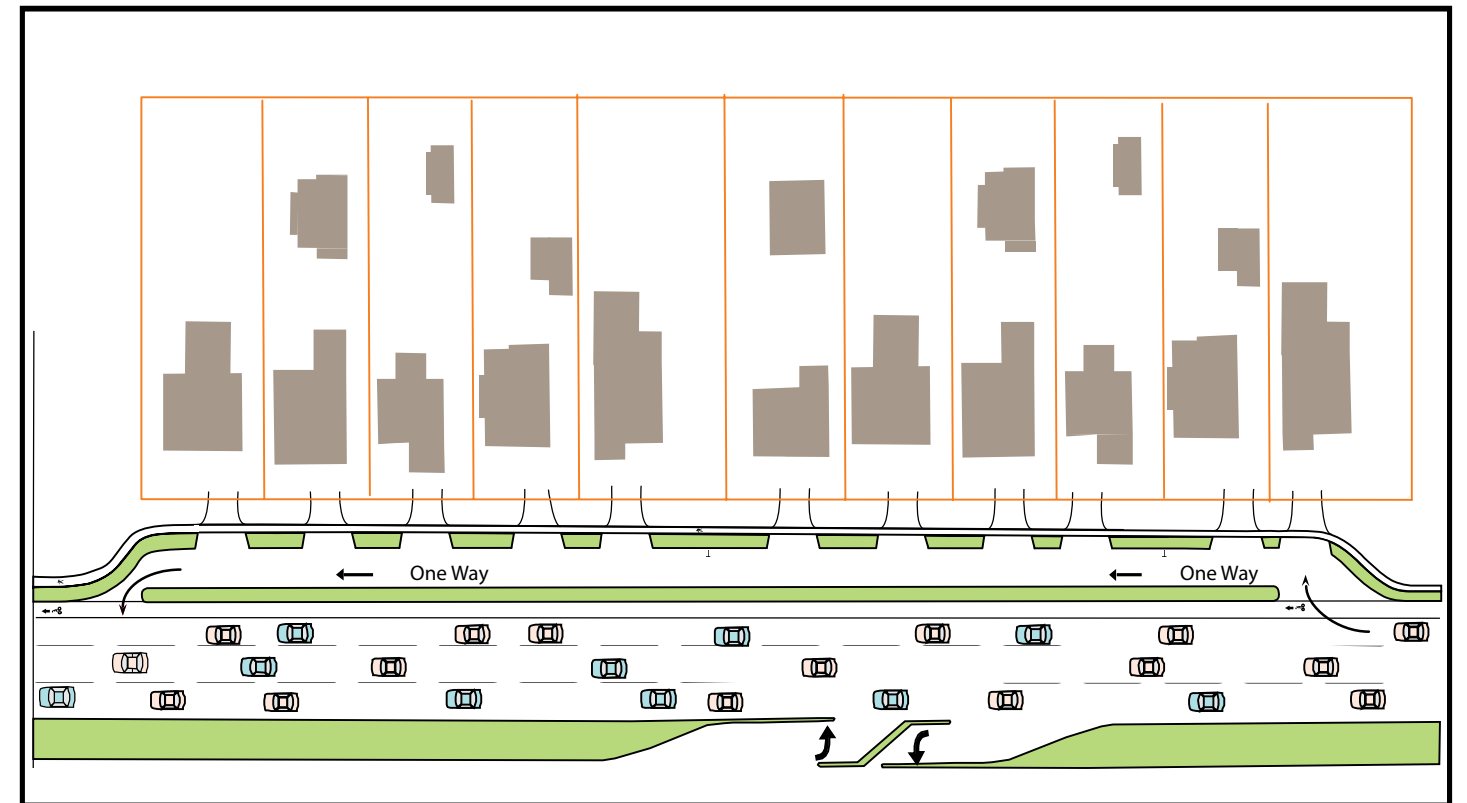
Roadway Without a Local Access Lane - Existing Conditions

11 driveways on the main roadway



Roadway With a Local Access Lane - Proposed

2 driveways on the main roadway



Existing Local Access Lane - Grant Road and Plumer Ave.



Benefits of Local Access Lanes

- Reduces the number of conflict points between vehicles, pedestrians and bicyclists
- Reduces congestion by maintaining the flow of traffic
- Provides more area for landscaping
- Makes the bicycle and pedestrian friendly environment safer

Trade-offs of Cross and Shared Access

- Residents lose direct access to the main roadway

Legend

- Vehicle Turning Movement
- Property Lines
- Buildings
- Potential Landscaped Area